

# PERSONS NOT IN THE LABOUR FORCE

AUSTRALIA

EMBARGO: 11:30AM (CANBERRA TIME) MON 9 MAR 1998

## CONTENTS

	<i>page</i>
Notes .....	2
Conceptual framework .....	3
Summary of findings .....	5

### TABLES

List of tables .....	9
Civilian population .....	10
Persons not in the labour force .....	11
Persons not in the labour force with marginal attachment .....	16
Discouraged jobseekers .....	20
Persons not in the labour force for childcare reasons .....	22
Persons who previously had a job .....	23
Populations .....	26

### ADDITIONAL INFORMATION

Explanatory notes .....	29
Technical notes .....	32
Glossary .....	35
Populations and items available from this survey .....	39
Supplementary surveys list .....	47

## INQUIRIES

- For information about other ABS statistics and services, please refer to the back cover of this publication.
- For further information about these statistics, contact Robert Bibo on Canberra (02) 6252 6661.

## NOTES

### ABOUT THIS PUBLICATION

This publication presents information about persons who are not in the labour force, that is, are neither employed nor unemployed. The data measures the potential supply of labour not reflected in employment and unemployment statistics.

There are many people not in the labour force who can be considered to have strong attachment to the labour force. These people would like to work but for a variety of reasons are either not actively looking for work or are not currently available to start a job if it was offered. There is an expectation that many of these people would move into the labour force either in the short term, or if labour market conditions improved.

The conceptual framework which follows, separates persons not in the labour force into more detailed categories depending on the strength of their attachment to the labour force.

### ABOUT THIS SURVEY

Statistics in this publication were obtained from the Australian Bureau of Statistics (ABS) survey, *Persons Not in The Labour Force*, conducted throughout Australia in September 1997 as a supplement to the ABS monthly Labour Force Survey.

Data from the survey relate to persons aged 15–69 years who were not in the labour force. Respondents were asked whether they wanted to work, about reasons they were not actively looking for work, about their availability for work and their main activity while not in the labour force.

### SYMBOLS AND OTHER USAGES

ABS	Australian Bureau of Statistics
ASCO	Australian Standard Classification of Occupations
LFS	Labour Force Survey
n.a.	not available
RSE	Relative Standard Error
SE	Standard Error
*	subject to sampling variability too high for most practical uses
..	not applicable

As estimates have been rounded, discrepancies may occur between sums of the component items and totals.

### STATE INQUIRIES

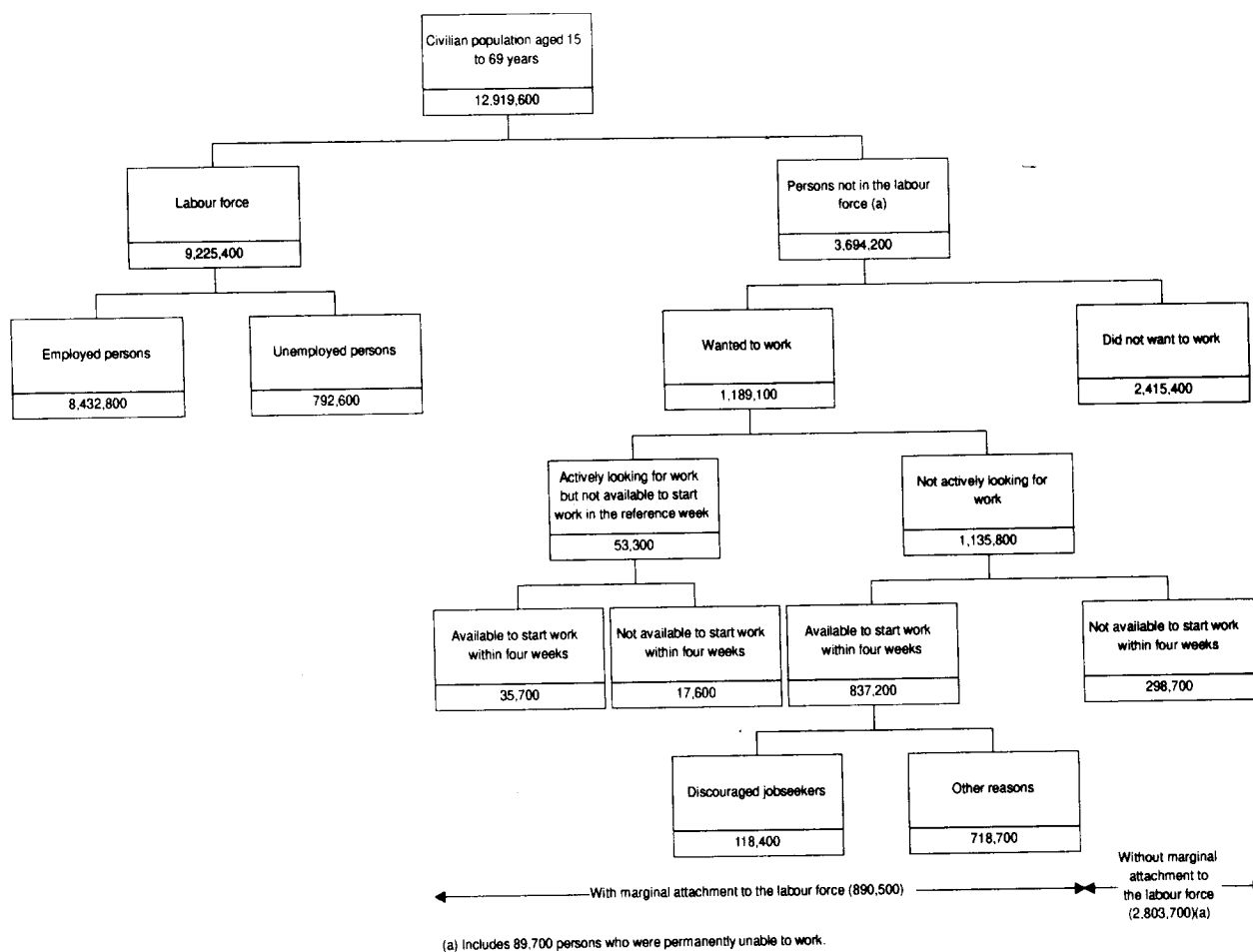
For State office contact numbers see the Supplementary Surveys listing in the back of this publication.

W. McLennan  
Australian Statistician

## PERSONS NOT IN THE LABOUR FORCE: CONCEPTUAL FRAMEWORK

The conceptual framework within which persons who are not in the labour force are classified is based on separating the civilian population into two mutually exclusive groups: the labour force (employed and unemployed persons) and persons not in the labour force.

People not in the labour force are separated into more detailed categories according to whether they have marginal attachment to the labour force ie, they have a close association with the labour force, because they want to work and in some cases are looking or available for work. Those people who are looking or available for work partially satisfy the criteria for being classified as unemployed. They can be considered to have a strong attachment to the labour force.



Conceptual framework --  
*continued*

According to the framework, people are marginally attached to the labour force if they:

- want to work and are actively looking for work but not available to start work in the reference week; or
- want to work and are not actively looking for work but available to start work within four weeks.

People are not marginally attached if they:

- do not want to work; or
- want to work but are not actively looking and not available to start work within four weeks.

## SUMMARY OF FINDINGS

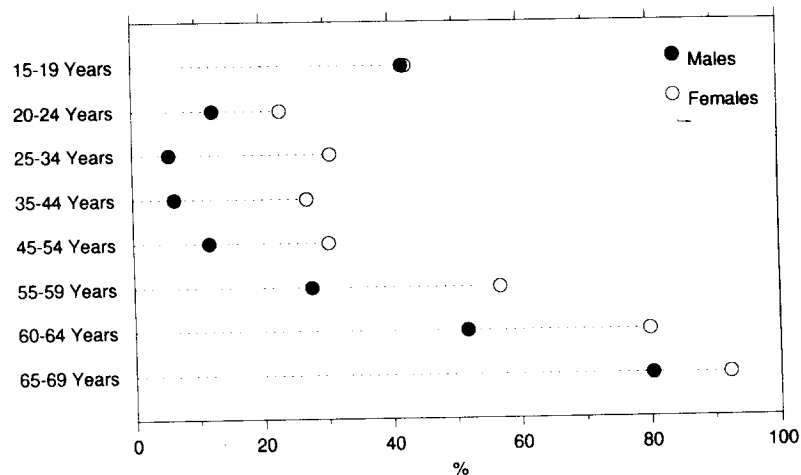
### OVERVIEW

In September 1997, there were 3,694,200 persons not in the labour force. This represents 29% of the civilian population aged 15–69 years. Of persons not in the labour force, 34% were males and 66% were females.

The proportion of persons not in the labour force generally rises with age for both males and females. The exceptions are the 15–24 years age group in which high levels of educational participation exist, and females during the main child bearing years of 25–34 years.

There were more females not in the labour force than males in all age groups. The proportion of females not in the labour force ranged from 23% for the 20–24 years age group to 92% for the 65–69 years age group. For males, the proportion ranged from 6% for the 25–34 years age group to 80% in the 65–69 years age group.

PROPORTION OF PERSONS NOT IN THE LABOUR FORCE BY AGE



### MARGINAL ATTACHMENT

Of the 890,500 persons marginally attached to the labour force in September 1997, 94% were not actively looking for work and were available to start within four weeks, and 6% were actively looking for work but not available to start work in the reference week.

Some 26% of females and 21% of males not in the labour force were marginally attached to the labour force. The proportion of males with marginal attachment to the labour force decreased by one percentage point since September 1996, while the proportion of females remained the same.

Of males marginally attached to the labour force, 64% intended to enter the labour force in the next 12 months while 19% did not. The remainder (17%) were not sure whether they would enter the labour force in the next 12 months. Of females marginally attached to the labour force, 51% intended to enter the labour force in the next 12 months, 27% did not intend to, and 22% were not sure.

MARGINAL ATTACHMENT –

continued

Of females marginally attached to the labour force, 66% would have preferred to work part-time while only 18% would have preferred to work full-time, and 16% had no preference for full-time or part-time work. Preferences for full-time and part-time work were more equally distributed for males, with 41% preferring part-time and 40% preferring full-time work.

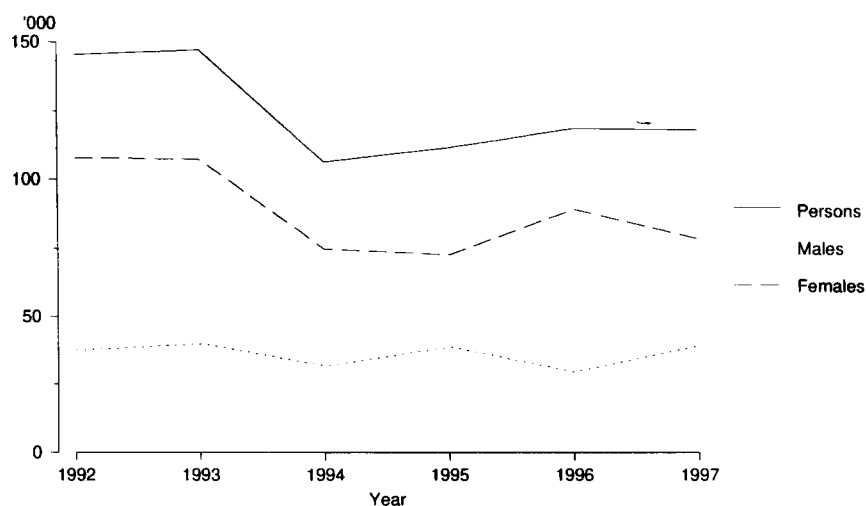
Main reason for not actively looking for work

The main reasons for not actively looking for work most commonly reported by males were 'attending an educational institution' (37%) and 'own ill health/physical disability' (20%). The most commonly reported reasons for females were 'childcare' (33%), 'attending an educational institution' (14%) and 'other family considerations' (10%).

Discouraged jobseekers

The number of discouraged jobseekers at September 1997 was estimated at 118,400, almost unchanged from September 1996. Over this period the number of female discouraged jobseekers fell by 10,700 and the number of male discouraged jobseekers increased by 10,200.

DISCOURAGED JOBSEEKERS, SEPTEMBER 1992 TO SEPTEMBER 1997



The majority of female discouraged jobseekers were aged 35–59 years (56%). In contrast, the majority of male discouraged jobseekers were aged 55–69 years (57%).

An estimated 61% of both male and female discouraged jobseekers reported that they might enter, or intended to enter the labour force in the next 12 months.

The ratio of discouraged jobseekers to the number of persons unemployed was 8% for males and 24% for females. For males, this proportion peaked at 8% in 1995 and 1997 with a fall to 6% in 1996. For females, this proportion peaked in 1992 (30%) and was at a low point in 1994 (22%) before rising to 27% in 1996.

Discouraged jobseekers –  
continued

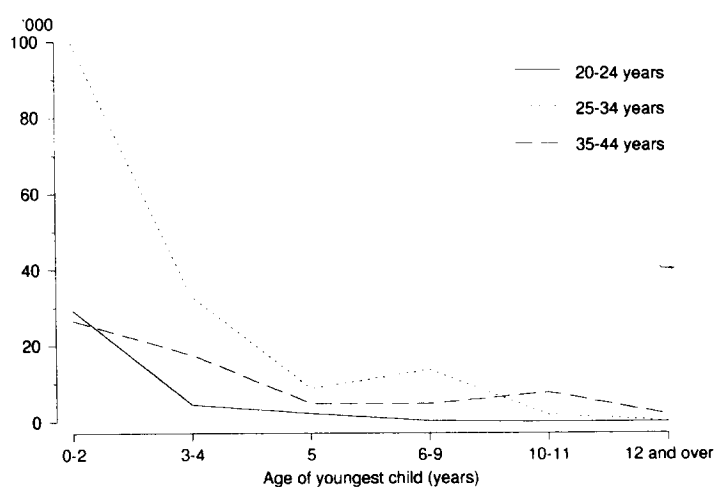
The main reasons for not actively looking for work reported by discouraged jobseekers were 'considered too young or too old by employers' (41%) and 'no jobs in locality or line of work' (22%).

Persons not in the labour force for childcare reasons

An estimated 296,500 persons wanted to work but were not in the labour force for childcare reasons. Some 97% were female, representing 4% of all females in the civilian population aged 15–69 years. The majority (55%) of these females were aged 25–34 years with a further 28% aged 35–44 years.

Of females not in the labour force for childcare reasons, 55% reported the age of their youngest child as 0–2 years and a further 26% reported 3–5 years.

#### AGE GROUPS OF FEMALES NOT IN THE LABOUR FORCE FOR CHILDCARE REASONS



PERSONS WITHOUT  
MARGINAL ATTACHMENT

The majority (86%) of those without marginal attachment to the labour force did not want to work (2,415,400 persons).

Another 298,700 persons (11%) without marginal attachment wanted to work, but were not actively looking for work and were not available to start work within four weeks. Of these, 66% were female, 28% were aged 25–34 years, and 42% reported that their main activity when not in the labour force was 'home duties/childcare'.

MAIN ACTIVITY WHEN NOT  
IN THE LABOUR FORCE

The most commonly reported main activity of persons not in the labour force was 'home duties/childcare' (42%), followed by 'attending an educational institution' (20%) and 'retired/voluntarily inactive' (19%).

The activity most commonly reported by males aged 15–34 years was 'attending an educational institution' (82%). For males aged 35–59 years the most commonly reported activity was 'own illness/injury' (35%). For older males (60–69 years), the most common response was 'retired/voluntarily inactive' (72%).

MAIN ACTIVITY WHEN NOT  
IN THE LABOUR FORCE –

*continued*

In comparison, for females aged 20 years or more, the most commonly reported response was 'home duties/childcare' (68%). Females aged 15–19 years most commonly reported 'attending an educational institution' as their main activity when not in the labour force (93%).

MAIN SOURCE OF INCOME

Government pensions or cash benefits were the main source of income for 53% of persons not in the labour force. Another 35% of persons had no income or relied on someone else's income. Although 66% of persons not in the labour force were female, they accounted for 78% of persons reporting 'nil or someone else's income'.

Of persons marginally attached to the labour force, 23% reported 'age, disability, sole parent's, widow's pension' as their main source of income and a further 24% reported other categories of government pensions and cash benefits. In comparison, 36% of persons without marginal attachment to the labour force reported 'age, disability, sole parent's, widow's pension' as their main source of income and 18% reported other categories of government pensions or cash benefits.

PREVIOUS JOB

An estimated 3,021,800 persons (82%) who were not in the labour force had previously had a job.

Of females, 43% had their last job within the last five years, and 38% had not had a job for 10 years or more. Of males, 56% had their last job within the last five years, 26% had their last job between five and 10 years ago, and 18% had their last job 10 or more years ago.

The majority (68%) of persons who were not in the labour force but had previously had a job were females. Of those that had previously had a job, males were more likely to have been job losers (55%), whereas 72% of females were job leavers.

The reasons most commonly reported by females for leaving their last job were 'pregnancy/to have children' (36%) and 'retired/did not want to work any longer' (18%). In comparison, male job leavers reported 'retired/did not want to work any longer' (46%) and 'returned to studies' (12%) as the main reasons for leaving their last job.



## LIST OF TABLES

### Civilian population

- 1 Labour force status, September 1992 to September 1997 10

### Persons not in the labour force

- 2 Selected characteristics and whether marginally attached 11

- 3 Main source of income 14

- 4 Main activity when not in the labour force by age 15

### Persons not in the labour force with marginal attachment

- 5 Main reason for not actively looking for work, September 1992 to September 1997 16

- 6 Main reason for not actively looking for work, intention to enter the labour force in the next 12 months and preference for full-time or part-time work 18

### Discouraged jobseekers

- 7 Selected characteristics, September 1992 to September 1997 20

### Persons not in the labour force for childcare reasons

- 8 Persons wanting to work but not actively looking for work 22

### Persons who previously had a job

- 9 Characteristics of last job and whether looked for work in the last 12 months 23

### Populations

- 10 State or Territory of usual residence 26

**TABLE 1. CIVILIAN POPULATION: LABOUR FORCE STATUS**  
(**'000**)

	<i>Sep.</i> <i>1992</i>	<i>Sep.</i> <i>1993</i>	<i>Sep.</i> <i>1994</i>	<i>Sep.</i> <i>1995</i>	<i>Sep.</i> <i>1996</i>	<i>Sep.</i> <i>1997</i>
<b>MALES</b>						
<i>Civilian population aged 15 to 69 years —</i>	6,191.2	6,243.3	6,219.3	6,330.6	6,414.7	6,456.8
Persons in the labour force	5,007.1	5,049.5	5,057.5	5,164.0	5,212.2	5,217.6
Employed	4,441.2	4,483.7	4,573.3	4,700.3	4,746.7	4,748.2
Unemployed	565.9	565.8	484.2	463.7	465.5	469.4
Persons not in the labour force	1,184.1	1,193.8	1,161.7	1,166.6	1,202.5	1,239.2
With marginal attachment to the labour force	246.7	247.1	215.3	261.8	262.0	259.5
Wanted to work and were actively looking for work	29.4	28.1	25.1	30.9	28.6	24.4
Were available to start work within four weeks	16.0	16.3	15.1	13.7	15.8	14.6
Were not available to start work within four weeks	13.3	11.8	10.0	17.3	12.8	9.8
Wanted to work but were not actively looking for work and were available to start work within four weeks	217.3	219.0	190.2	230.9	233.3	235.1
Discouraged jobseekers	37.8	40.0	31.7	39.0	29.5	39.7
Other	179.5	179.0	158.5	191.9	203.9	195.4
Without marginal attachment to the labour force(a)	937.5	946.7	946.4	904.8	940.5	979.7
Wanted to work but were not actively looking for work and were not available to start work within four weeks	89.0	98.6	100.7	95.0	92.4	101.1
Did not want to work	817.8	813.1	787.6	768.6	784.2	819.7
<b>FEMALES</b>						
<i>Civilian population aged 15 to 69 years —</i>	6,118.7	6,178.8	6,219.2	6,292.8	6,383.8	6,462.7
Persons in the labour force	3,640.5	3,695.1	3,818.0	3,893.0	3,970.9	4,007.8
Employed	3,281.1	3,321.3	3,471.4	3,593.4	3,636.4	3,684.5
Unemployed	359.4	373.8	346.5	299.6	334.5	323.3
Persons not in the labour force	2,478.2	2,483.7	2,401.3	2,399.8	2,412.9	2,454.9
With marginal attachment to the labour force	599.7	660.7	558.0	601.0	617.6	630.9
Wanted to work and were actively looking for work	29.7	30.2	36.2	32.9	29.4	28.9
Were available to start work within four weeks	17.8	18.5	23.3	19.1	18.9	21.1
Were not available to start work within four weeks	11.9	11.7	13.0	13.7	10.5	7.8
Wanted to work but were not actively looking for work and were available to start work within four weeks	570.0	630.4	521.8	568.1	588.2	602.0
Discouraged jobseekers	107.8	107.4	74.8	72.9	89.4	78.7
Other	462.2	523.1	447.0	495.2	498.8	523.4
Without marginal attachment to the labour force(a)	1,878.5	1,823.1	1,843.2	1,798.8	1,795.3	1,824.0
Wanted to work but were not actively looking for work and were not available to start work within four weeks	166.0	172.4	188.8	205.7	216.0	197.6
Did not want to work	1,698.3	1,636.6	1,622.3	1,573.5	1,544.5	1,595.6
<b>PERSONS</b>						
<i>Civilian population aged 15 to 69 years —</i>	<b>12,309.8</b>	<b>12,422.1</b>	<b>12,438.5</b>	<b>12,623.3</b>	<b>12,798.5</b>	<b>12,919.6</b>
Persons in the labour force	8,647.5	8,744.6	8,875.5	9,057.0	9,183.1	9,225.4
Employed	7,722.2	7,804.9	8,044.7	8,293.7	8,383.1	8,432.8
Unemployed	925.3	939.6	830.8	763.3	800.0	792.6
Persons not in the labour force	3,662.3	3,677.5	3,563.0	3,566.3	3,615.4	3,694.2
With marginal attachment to the labour force	846.4	907.8	773.3	862.8	879.6	890.5
Wanted to work and were actively looking for work	59.1	58.3	61.4	63.8	58.0	53.3
Were available to start work within four weeks	33.8	34.8	38.4	32.8	34.7	35.7
Were not available to start work within four weeks	25.3	23.5	22.9	31.0	23.3	17.6
Wanted to work but were not actively looking for work and were available to start work within four weeks	787.3	849.5	712.0	799.0	821.5	837.2
Discouraged jobseekers	145.6	147.4	106.5	111.9	118.9	118.4
Other	641.7	702.0	605.5	687.1	702.6	718.7
Without marginal attachment to the labour force(a)	2,815.9	2,769.8	2,789.7	2,703.5	2,735.8	2,803.7
Wanted to work but were not actively looking for work and were not available to start work within four weeks	255.0	271.0	289.6	300.7	308.4	298.7
Did not want to work	2,516.1	2,449.7	2,409.9	2,342.1	2,328.7	2,415.4

(a) Includes persons who were permanently unable to work.

TABLE 2. PERSONS NOT IN THE LABOUR FORCE WITH AND WITHOUT MARGINAL ATTACHMENT  
(\*000)

	With marginal attachment to the labour force				Without marginal attachment to the labour force				Total not in the labour force	Proportion not in the labour force %
	Wanted to work and were actively looking for work	Discouraged jobseekers	Other	Total	Total	Wanted to work but neither looking nor available for work	Did not want to work	Total(a)		
<b>MALES</b>										
<i>State or Territory of usual residence —</i>										
New South Wales	* 6.8	12.9	58.2	71.1	77.9	31.6	289.8	356.1	434.0	19.9
Victoria	* 6.3	12.3	45.5	57.8	64.1	28.1	204.3	244.9	309.1	19.2
Queensland	5.3	7.1	42.4	49.4	54.7	16.5	153.1	171.9	226.7	18.8
South Australia	* 2.3	* 2.0	18.5	20.5	22.8	6.8	67.5	76.5	99.2	19.3
Western Australia	* 2.7	* 2.6	17.4	20.0	22.7	10.4	68.7	80.2	102.9	16.1
Tasmania	* 0.5	* 1.9	7.2	9.1	9.6	2.7	21.4	28.5	38.1	23.3
Northern Territory	* 0.0	* 0.4	* 1.7	* 2.1	* 2.1	3.1	6.7	10.8	12.9	21.0
Australian Capital Territory	* 0.6	* 0.6	4.5	5.0	5.6	1.8	8.2	10.7	16.3	15.0
<i>Age group (years) —</i>										
15-19	* 5.5	* 3.9	74.5	78.4	83.9	26.8	162.2	190.2	274.2	42.0
20-24	7.0	* 2.3	20.1	22.3	29.3	12.8	42.1	56.0	85.3	12.5
25-34	* 3.5	* 0.9	20.7	21.6	25.0	13.9	32.6	55.5	80.6	5.7
35-44	* 3.3	* 3.3	23.2	26.5	29.8	17.3	34.7	59.5	89.3	6.4
45-54	* 2.7	6.9	24.3	31.2	33.9	15.1	78.6	109.9	143.8	11.8
55-59	* 1.5	* 4.6	12.2	16.8	18.3	6.8	84.0	102.1	120.4	27.6
60-64	* 0.9	9.1	11.6	20.7	21.6	5.8	149.6	162.8	184.4	51.7
65-69	* 0.0	8.8	8.8	17.6	17.6	* 2.6	235.9	243.6	261.2	80.3
<i>Relationship in household —</i>										
Family member	17.1	30.2	159.6	189.8	206.9	79.9	655.7	779.7	986.6	18.9
Husband	7.9	21.5	57.4	78.9	86.8	37.7	441.2	508.9	595.8	15.8
With dependants	6.0	* 5.5	24.3	29.8	35.8	19.0	65.2	92.7	128.6	6.2
Without dependants	* 1.9	16.0	33.1	49.1	51.0	18.7	376.0	416.2	467.2	27.6
Lone parent	* 0.0	* 1.2	8.9	10.1	10.1	* 1.8	13.1	15.6	25.7	24.3
With dependants	* 0.0	* 0.8	7.6	8.4	8.4	* 1.1	* 5.2	6.2	14.6	22.2
Without dependants	* 0.0	* 0.4	* 1.3	* 1.7	* 1.7	* 0.7	7.9	9.3	11.1	27.7
Dependent student	* 5.0	* 2.6	71.6	74.2	79.2	30.3	156.2	187.2	266.4	57.3
Non-dependent child	* 3.4	* 2.4	16.2	18.5	21.9	8.6	26.5	46.0	67.9	9.3
Other family person	* 0.8	* 2.4	* 5.5	8.0	8.8	* 1.6	18.7	22.1	30.8	22.1
Non-family member	* 4.6	8.1	29.7	37.8	42.5	17.5	125.7	156.8	199.2	19.0
Lone person	* 2.3	6.8	19.3	26.1	28.4	12.0	91.3	112.2	140.5	24.0
Not living alone	* 2.3	* 1.3	10.4	11.7	14.1	* 5.5	34.4	44.6	58.7	12.6
Not determined	* 2.7	* 1.4	6.1	7.5	10.2	* 3.7	38.3	43.2	53.5	23.4
<i>Birthplace —</i>										
Born in Australia	17.6	23.9	144.9	168.7	186.3	70.4	533.6	648.9	835.2	17.6
Born outside Australia	6.8	15.9	50.5	66.4	73.2	30.7	286.2	330.8	404.0	23.1
Born in main English speaking countries	* 2.0	* 2.7	15.9	18.5	20.5	7.6	75.0	85.5	106.1	16.5
Born in other countries	* 4.8	13.2	34.6	47.9	52.7	23.0	211.1	245.3	298.0	27.0
<i>Time since last job —</i>										
Had had a job	19.8	33.6	133.7	167.3	187.1	75.1	648.1	772.2	959.3	n.a.
Under 12 months	11.7	* 4.0	55.0	59.0	70.7	26.3	91.8	120.4	191.1	n.a.
1 and under 3 years	* 5.6	7.4	32.5	39.8	45.4	19.3	108.9	134.4	179.8	n.a.
3 and under 5 years	* 0.7	8.8	19.6	28.4	29.1	8.9	116.6	133.5	162.6	n.a.
5 and under 10 years	* 1.3	9.2	18.7	27.9	29.2	15.6	188.4	220.4	249.7	n.a.
10 and under 20 years	* 0.6	* 3.3	7.2	10.6	11.2	* 4.8	110.3	125.4	136.6	n.a.
20 years or more	* 0.0	* 0.9	* 0.7	* 1.6	* 1.6	* 0.2	32.1	38.0	39.6	n.a.
Had never had a job	* 4.6	6.2	61.7	67.8	72.4	26.0	171.6	207.5	279.9	n.a.
<i>Main activity when not in the labour force —</i>										
Home duties/childcare	* 1.8	* 5.3	16.7	22.0	23.8	5.9	31.6	38.8	62.6	n.a.
Attending an educational institution	12.6	* 4.4	96.7	101.1	113.7	42.3	226.0	268.7	382.3	n.a.
Retired/voluntarily inactive	* 1.4	20.7	22.6	43.3	44.7	5.8	344.1	359.1	403.8	n.a.
Own disability/handicap	* 0.3	* 0.5	7.3	7.7	8.0	* 5.4	45.5	74.0	82.0	n.a.
Own illness/injury	* 3.9	* 2.1	27.0	29.2	33.1	35.3	117.5	175.1	208.2	n.a.
Looking after ill/disabled person	* 0.2	* 0.6	* 2.4	* 3.0	* 3.3	* 1.9	14.4	16.3	19.6	n.a.
Travel/holiday/leisure activity	* 0.8	* 1.9	11.1	13.1	13.9	* 0.6	19.5	20.4	34.3	n.a.
Worked in unpaid voluntary job	* 0.9	* 1.1	* 3.8	* 4.9	5.8	* 1.1	12.8	16.0	21.8	n.a.
Other	* 2.5	* 3.1	7.7	10.8	13.3	* 2.8	8.4	11.2	24.5	n.a.
<b>Total</b>	<b>24.4</b>	<b>39.7</b>	<b>195.4</b>	<b>235.1</b>	<b>259.5</b>	<b>101.1</b>	<b>819.7</b>	<b>979.7</b>	<b>1,239.2</b>	<b>19.1</b>

TABLE 2. PERSONS NOT IN THE LABOUR FORCE WITH AND WITHOUT MARGINAL ATTACHMENT  
(<sup>'000</sup>)—continued

	With marginal attachment to the labour force				Without marginal attachment to the labour force				Total not in the labour force	Proportion not in the labour force %
	Wanted to work and were actively looking for work	Discouraged jobseekers	Other	Total	Total	Wanted to work but neither looking nor available for work	Did not want to work	Total(a)		
<b>FEMALES</b>										
<i>State or Territory of usual residence —</i>										
New South Wales	8.6	26.4	171.6	198.0	206.6	70.7	567.8	655.8	862.4	39.5
Victoria	6.6	20.1	128.7	148.8	155.4	53.3	388.0	450.9	606.3	37.4
Queensland	6.1	11.6	98.3	109.9	116.0	36.0	279.3	315.8	431.8	36.1
South Australia	* 1.9	8.1	44.4	52.5	54.4	13.0	131.1	144.3	198.7	38.6
Western Australia	3.9	8.3	48.8	57.1	60.9	13.8	156.5	170.9	231.8	36.8
Tasmania	* 0.7	2.3	16.8	19.1	19.8	5.4	44.7	52.0	71.8	44.4
Northern Territory	* 0.4	* 0.5	6.2	6.7	7.2	* 2.4	11.2	14.1	21.3	34.7
Australian Capital Territory	* 0.7	1.4	8.6	9.9	10.6	2.9	16.9	20.2	30.8	28.0
<i>Age group (years) —</i>										
15-19	8.8	* 3.1	67.8	70.9	79.7	29.7	156.3	185.9	265.6	42.6
20-24	* 4.8	* 3.4	56.7	60.2	64.9	17.6	71.6	91.1	156.0	23.1
25-34	8.9	11.3	165.2	176.5	185.4	68.4	185.2	256.2	441.6	30.7
35-44	* 5.1	12.8	131.5	144.4	149.5	43.3	187.7	236.1	385.6	27.0
45-54	* 0.4	18.4	65.1	83.5	83.9	23.1	246.3	278.5	362.4	30.4
55-59	* 0.5	13.1	16.9	30.0	30.5	7.3	195.9	208.8	239.2	56.8
60-64	* 0.4	9.4	11.9	21.2	21.6	* 5.4	257.6	266.2	287.8	79.9
65-69	* 0.0	7.1	8.3	15.4	15.4	* 2.9	295.1	301.3	316.7	92.3
<i>Relationship in household —</i>										
Family member	24.8	64.2	476.2	540.4	565.2	174.1	1,338.1	1,533.8	2,099.0	38.8
Wife	11.2	47.8	302.2	349.9	361.2	114.9	1,013.0	1,141.7	1,502.9	39.5
With dependants	9.3	21.3	241.0	262.3	271.6	89.3	363.5	454.8	726.4	36.0
Without dependants	* 2.0	26.4	61.2	87.6	89.6	25.6	649.5	686.9	776.5	43.4
Lone parent	* 4.3	11.7	99.9	111.6	115.8	29.0	123.6	154.8	270.7	47.3
With dependants	* 4.1	9.6	93.7	103.3	107.3	26.8	77.4	104.6	212.0	46.2
Without dependants	* 0.2	* 2.1	6.2	8.3	8.5	* 2.2	46.2	50.2	58.7	51.9
Dependent student	6.3	* 1.5	56.7	58.3	64.6	23.2	140.4	163.6	228.2	48.3
Non-dependent child	* 2.0	* 1.6	10.7	12.3	14.3	* 4.9	23.4	33.0	47.4	10.8
Other family person	* 1.0	* 1.5	6.7	8.2	9.2	* 2.1	37.7	40.6	49.8	39.1
Non-family member	* 2.8	11.5	29.2	40.7	43.6	19.1	195.6	223.5	267.1	32.3
Lone person	* 1.2	9.7	18.6	28.3	29.5	9.7	158.3	172.2	201.7	43.1
Not living alone	* 1.7	* 1.8	10.6	12.4	14.1	9.4	37.3	51.3	65.3	18.2
Not determined	* 1.2	* 3.0	18.0	20.9	22.1	* 4.3	61.9	66.8	88.9	37.0
<i>Birthplace —</i>										
Born in Australia	21.5	45.4	389.8	435.3	456.8	134.5	1,072.2	1,229.5	1,686.3	35.5
Born outside Australia	7.4	33.2	133.5	166.8	174.1	63.1	523.4	594.6	768.7	44.4
Born in main English speaking countries	* 1.7	6.9	46.2	53.1	54.8	17.9	157.0	176.7	231.5	36.1
Born in other countries	5.6	26.4	87.3	113.7	119.3	45.2	366.4	417.9	537.2	49.3
<i>Time since last job —</i>										
Had had a job	21.0	67.2	446.5	513.7	534.6	162.8	1,342.9	1,527.9	2,062.5	n.a.
Under 12 months	10.8	* 4.0	109.1	113.1	123.9	48.3	129.8	178.5	302.3	n.a.
1 and under 3 years	* 4.7	13.8	100.5	114.2	118.9	37.6	169.0	209.3	328.2	n.a.
3 and under 5 years	* 2.4	12.2	68.1	80.3	82.7	23.8	142.2	167.1	249.8	n.a.
5 and under 10 years	* 2.1	15.9	87.5	103.4	105.6	26.7	262.1	292.3	397.8	n.a.
10 and under 20 years	* 1.0	13.8	60.1	73.9	74.9	16.0	266.0	287.7	362.6	n.a.
20 years or more	* 0.0	7.5	21.2	28.7	28.7	10.3	373.8	393.0	421.7	n.a.
Had never had a job	7.9	11.5	76.9	88.4	96.3	34.8	252.7	296.2	392.4	n.a.
<i>Main activity when not in the labour force —</i>										
Home duties/childcare	14.8	54.7	371.9	426.5	441.3	120.6	932.2	1,058.1	1,499.4	n.a.
Attending an educational institution	12.1	* 4.8	92.3	97.0	109.1	40.5	211.9	252.7	361.9	n.a.
Retired/voluntarily inactive	* 0.4	10.7	12.1	22.7	23.2	* 4.5	277.5	285.5	308.7	n.a.
Own disability/handicap	* 0.0	* 0.0	* 3.7	* 3.7	* 3.7	* 2.0	19.5	34.1	37.7	n.a.
Own illness/injury	* 0.0	* 1.0	14.1	15.1	15.1	19.1	57.7	85.1	100.2	n.a.
Looking after ill/disabled person	* 0.2	* 1.0	7.0	8.1	8.3	7.2	45.3	53.3	61.6	n.a.
Travel/holiday/leisure activity	* 0.6	* 0.6	11.8	12.3	12.9	* 0.5	20.0	20.4	33.3	n.a.
Worked in unpaid voluntary job	* 0.0	* 5.0	6.4	11.4	11.4	* 2.0	28.7	30.7	42.2	n.a.
Other	* 0.8	* 0.9	* 4.3	* 5.2	6.0	* 1.1	* 2.9	* 4.0	10.0	n.a.
<b>Total</b>	<b>28.9</b>	<b>78.7</b>	<b>523.4</b>	<b>602.0</b>	<b>630.9</b>	<b>197.6</b>	<b>1,595.6</b>	<b>1,824.0</b>	<b>2,454.9</b>	<b>37.9</b>

TABLE 2. PERSONS NOT IN THE LABOUR FORCE WITH AND WITHOUT MARGINAL ATTACHMENT  
(\*000)—continued

	With marginal attachment to the labour force				Without marginal attachment to the labour force			Total not in the labour force	Proportion not in the labour force %	
	Wanted to work and were actively looking for work	Dis-couraged jobseekers	Other	Total	Total	Wanted to work but neither looking nor available for work	Did not want to work			Total(a)
<b>PERSONS</b>										
<i>State or Territory of usual residence —</i>										
New South Wales	15.4	39.3	229.8	269.1	284.5	102.3	857.6	1,012.0	1,296.5	29.7
Victoria	13.0	32.4	174.2	206.6	219.5	81.4	592.3	695.8	915.3	28.3
Queensland	11.4	18.6	140.7	159.3	170.7	52.5	432.4	487.8	658.5	27.4
South Australia	4.1	10.2	62.8	73.0	77.1	19.8	198.7	220.8	298.0	28.9
Western Australia	6.6	10.8	66.2	77.1	83.6	24.3	225.2	251.1	334.7	26.3
Tasmania	* 1.2	4.2	24.0	28.3	29.4	8.2	66.2	80.5	109.9	33.8
Northern Territory	* 0.4	* 0.9	7.9	8.9	9.3	5.5	17.9	24.9	34.2	27.8
Australian Capital Territory	1.2	1.9	13.1	15.0	16.2	4.7	25.0	30.9	47.1	21.5
<i>Age group (years) —</i>										
15-19	14.3	7.0	142.3	149.3	163.6	56.5	318.4	376.2	539.8	42.3
20-24	11.8	5.7	76.8	82.5	94.3	30.4	113.7	147.1	241.4	17.8
25-34	12.4	12.2	185.9	198.1	210.5	82.3	217.8	311.7	522.2	18.3
35-44	8.4	16.2	154.7	170.9	179.3	60.6	222.4	295.6	474.9	16.8
45-54	* 3.1	25.3	89.4	114.7	117.9	38.2	324.9	388.4	506.2	21.0
55-59	* 2.0	17.7	29.1	46.8	48.8	14.1	279.9	310.9	359.7	41.9
60-64	* 1.3	18.5	23.5	42.0	43.2	11.2	407.2	429.0	472.2	65.9
65-69	* 0.0	15.9	17.0	33.0	33.0	* 5.5	531.1	544.9	577.9	86.4
<i>Relationship in household —</i>										
Family member	41.9	94.3	635.8	730.1	772.0	254.1	1,993.8	2,313.5	3,085.5	29.0
Wife	19.1	69.3	359.6	428.9	448.0	152.5	1,454.2	1,650.7	2,098.7	27.7
With dependants	15.3	26.9	265.3	292.2	307.4	108.3	428.7	547.6	855.0	20.9
Without dependants	* 3.9	42.4	94.3	136.7	140.6	44.3	1,025.6	1,103.1	1,243.7	35.7
Lone parent	* 4.3	12.9	108.8	121.7	126.0	30.8	136.7	170.4	296.4	43.7
With dependants	* 4.1	10.4	101.3	111.7	115.8	27.9	82.6	110.9	226.6	43.2
Without dependants	* 0.2	* 2.6	7.5	10.0	10.2	* 2.9	54.1	59.5	69.8	45.6
Dependent student	11.3	* 4.2	128.3	132.5	143.8	53.5	296.6	350.8	494.6	52.8
Non-dependent child	* 5.4	* 4.0	26.9	30.9	36.3	13.5	49.9	79.0	115.3	9.9
Other family person	* 1.8	* 4.0	12.2	16.2	18.0	* 3.8	56.4	62.6	80.6	30.2
Non-family member	7.5	19.7	58.9	78.5	86.0	36.6	321.4	380.3	466.3	24.9
Lone person	* 3.5	16.5	37.9	54.4	57.9	21.7	249.6	284.4	342.3	32.5
Not living alone	* 4.0	* 3.2	21.0	24.1	28.1	14.9	71.8	95.9	124.0	15.1
Not determined	* 3.9	* 4.4	24.1	28.5	32.4	8.0	100.2	110.0	142.4	30.4
<i>Birthplace —</i>										
Born in Australia	39.1	69.3	534.7	604.0	643.1	204.9	1,605.8	1,878.4	2,521.5	26.6
Born outside Australia	14.2	49.1	184.0	233.1	247.3	93.8	809.6	925.4	1,172.7	33.7
Born in main English speaking countries	* 3.7	9.5	62.1	71.6	75.3	25.5	232.0	262.2	337.5	26.3
Born in other countries	10.5	39.6	122.0	161.6	172.0	68.2	577.5	663.1	835.2	38.1
<i>Time since last job —</i>										
Had had a job	40.8	100.8	580.2	681.0	721.8	237.9	1,991.0	2,300.1	3,021.8	n.a.
Under 12 months	22.4	8.0	164.1	172.1	194.5	74.6	221.6	298.9	493.4	n.a.
1 and under 3 years	10.2	21.1	132.9	154.0	164.3	56.9	277.9	343.7	508.0	n.a.
3 and under 5 years	* 3.1	20.9	87.7	108.7	111.8	32.7	258.8	300.6	412.4	n.a.
5 and under 10 years	* 3.5	25.1	106.2	131.3	134.8	42.3	450.5	512.7	647.5	n.a.
10 and under 20 years	* 1.6	17.2	67.3	84.5	86.1	20.8	376.4	413.1	499.2	n.a.
20 years or more	* 0.0	8.4	22.0	30.3	30.3	10.5	405.8	431.0	461.3	n.a.
Had never had a job	12.5	17.7	138.5	156.2	168.7	60.7	424.4	503.7	672.3	n.a.
<i>Main activity when not in the labour force —</i>										
Home duties/childcare	16.6	60.0	388.6	448.5	465.1	126.5	963.7	1,097.0	1,562.0	n.a.
Attending an educational institution	24.7	9.2	189.0	198.2	222.8	82.8	437.9	521.4	744.2	n.a.
Retired/voluntarily inactive	* 1.8	31.3	34.7	66.1	67.8	10.3	621.7	644.6	712.4	n.a.
Own disability/handicap	* 0.3	* 0.5	10.9	11.4	11.7	7.4	65.0	108.1	119.8	n.a.
Own illness/injury	* 3.9	* 3.1	41.2	44.3	48.2	54.3	175.2	260.3	308.4	n.a.
Looking after ill/disabled person	* 0.4	* 1.7	9.4	11.1	11.5	9.1	59.8	69.7	81.2	n.a.
Travel/holiday/leisure activity	* 1.4	* 2.5	22.9	25.4	26.8	* 1.1	39.4	40.8	67.6	n.a.
Worked in unpaid voluntary job	* 0.9	6.2	10.2	16.3	17.2	* 3.2	41.5	46.7	63.9	n.a.
Other	* 3.3	* 4.0	12.0	16.0	19.3	* 3.9	11.3	15.2	34.5	n.a.
<b>Total</b>	<b>53.3</b>	<b>118.4</b>	<b>718.7</b>	<b>837.2</b>	<b>890.5</b>	<b>298.7</b>	<b>2,415.4</b>	<b>2,803.7</b>	<b>3,694.2</b>	<b>28.5</b>

(a) Includes 89,700 persons who were permanently unable to work.

TABLE 3. MAIN SOURCE OF INCOME OF PERSONS NOT IN THE LABOUR FORCE  
(\*000)

	<i>With marginal attachment to the labour force</i>				<i>Without marginal attachment to the labour force</i>				<i>Total not in the labour force</i>
	<i>Wanted to work and were actively looking for work</i>	<i>Wanted to work but were not actively looking for work and were available to start work within four weeks</i>			<i>Wanted to work but neither looking nor available for work</i>	<i>Did not want to work</i>	<i>Total(a)</i>		
		<i>Dis-couraged jobseeker</i>	<i>Other</i>	<i>Total</i>					
<b>MALES</b>									
<i>Main source of income —</i>									
Government pension or cash benefit	13.5	24.6	87.9	112.6	126.1	54.8	489.2	599.2	725.2
Age/disability/sole parents'/widow's	* 2.1	10.8	39.0	49.8	51.9	24.6	338.2	407.9	459.8
War disability/repatriation/service/widow's	* 0.0	* 0.2	* 0.3	* 0.5	* 0.5	* 0.6	14.5	18.6	19.1
ABSTUDY or AUSTUDY	* 3.1	* 1.1	24.1	25.2	28.3	11.4	55.0	66.4	94.7
Other government pension or cash benefit	8.2	12.5	24.6	37.1	45.3	18.2	81.5	106.3	151.6
Own business or rental properties	* 0.4	* 0.6	* 2.7	* 3.3	* 3.7	* 0.5	15.3	15.8	19.5
Dividends or interest	* 0.6	* 1.5	6.5	8.0	8.6	* 0.7	34.5	35.2	43.8
Superannuation or annuity	* 0.0	* 3.9	7.2	11.1	11.1	* 2.1	82.0	85.5	96.6
Workers compensation or insurance	* 0.0	* 0.0	* 3.4	* 3.4	* 3.4	7.8	6.2	15.3	18.8
Other income(b)	* 0.9	* 1.7	15.1	16.8	17.7	* 3.9	24.0	28.0	45.7
Nil or someone else's income	9.1	7.4	72.5	79.9	89.0	31.3	168.6	200.6	289.6
<b>Total</b>	<b>24.4</b>	<b>39.7</b>	<b>195.4</b>	<b>235.1</b>	<b>259.5</b>	<b>101.1</b>	<b>819.7</b>	<b>979.7</b>	<b>1,239.2</b>
<b>FEMALES</b>									
<i>Main source of income —</i>									
Government pension or cash benefit	13.4	43.8	230.8	274.6	288.0	87.2	819.6	934.0	1,222.0
Age/disability/sole parents'/widow's	* 4.4	27.0	121.3	148.3	152.7	37.8	548.6	610.4	763.1
War disability/repatriation/service/widow's	* 0.0	* 1.1	* 1.5	* 2.5	* 2.5	* 0.3	25.1	25.4	27.9
ABSTUDY or AUSTUDY	* 2.9	* 0.5	25.3	25.8	28.7	12.4	54.1	66.5	95.2
Other government pension or cash benefit	6.1	15.2	82.7	97.9	104.1	36.7	191.9	231.7	335.8
Own business or rental properties	* 0.1	* 0.8	* 3.6	* 4.3	* 4.4	* 1.1	41.4	42.9	47.3
Dividends or interest	* 0.0	* 1.2	* 2.7	* 3.8	* 3.8	* 2.0	52.0	54.0	57.8
Superannuation or annuity	* 0.0	* 0.6	* 2.1	* 2.7	* 2.7	* 2.2	48.9	51.3	54.0
Workers compensation or insurance	* 0.0	* 0.0	* 1.3	* 1.3	* 1.3	* 2.7	* 3.9	6.8	8.1
Other income(b)	* 1.0	* 1.8	11.6	13.4	14.4	* 4.5	29.4	34.2	48.5
Nil or someone else's income	14.4	30.5	271.3	301.8	316.2	97.9	600.4	700.9	1,017.1
<b>Total</b>	<b>28.9</b>	<b>78.7</b>	<b>523.4</b>	<b>602.0</b>	<b>630.9</b>	<b>197.6</b>	<b>1,595.6</b>	<b>1,824.0</b>	<b>2,454.9</b>
<b>PERSONS</b>									
<i>Main source of income —</i>									
Government pension or cash benefit	26.9	68.5	318.7	387.2	414.1	142.0	1,308.8	1,533.2	1,947.3
Age/disability/sole parents'/widow's	6.5	37.8	160.3	198.1	204.6	62.4	886.8	1,018.3	1,222.9
War disability/repatriation/service/widow's	* 0.0	* 1.3	* 1.7	* 3.0	* 3.0	* 1.0	39.6	44.0	47.0
ABSTUDY or AUSTUDY	6.0	* 1.6	49.4	51.0	57.1	23.8	109.1	132.9	189.9
Other government pension or cash benefit	14.4	27.7	107.3	135.0	149.4	54.9	273.3	338.0	487.4
Own business or rental properties	* 0.5	* 1.4	6.3	7.7	8.1	* 1.6	56.7	58.7	66.8
Dividends or interest	* 0.6	* 2.6	9.1	11.8	12.4	* 2.7	86.5	89.2	101.6
Superannuation or annuity	* 0.0	* 4.5	9.3	13.8	13.8	* 4.3	130.9	136.8	150.6
Workers compensation or insurance	* 0.0	* 0.0	* 4.7	* 4.7	* 4.7	10.4	10.0	22.1	26.9
Other income(b)	* 1.8	* 3.5	26.7	30.2	32.1	8.4	53.4	62.2	94.3
Nil or someone else's income	23.5	37.9	343.9	381.8	405.3	129.2	769.0	901.5	1,306.7
<b>Total</b>	<b>53.3</b>	<b>118.4</b>	<b>718.7</b>	<b>837.2</b>	<b>890.5</b>	<b>298.7</b>	<b>2,415.4</b>	<b>2,803.7</b>	<b>3,694.2</b>

(a) Includes 89,700 persons who were permanently unable to work. (b) Includes child support or maintenance.

TABLE 4. MAIN ACTIVITY OF PERSONS NOT IN THE LABOUR FORCE  
(\*000)

	Age group (years)							Total	
	15-19	20-24	25-34	35-44	45-54	55-59	60-64		65-69
<b>MALES</b>									
Home duties/childcare	* 0.0	* 0.8	8.6	16.8	11.0	10.2	6.4	8.8	62.6
Attending an educational institution	265.0	67.8	27.3	13.2	6.8	* 1.1	* 0.7	* 0.4	382.3
Retired/voluntarily inactive	* 1.0	* 1.1	* 2.2	* 4.8	26.5	47.8	115.7	204.7	403.8
Own disability/handicap	* 1.4	* 5.1	11.8	14.1	18.4	14.2	10.1	6.9	82.0
Own illness/injury	* 1.6	* 5.6	21.7	28.2	57.0	37.0	36.2	20.9	208.2
Looking after ill/disabled person	* 0.0	* 0.2	* 1.2	* 2.3	* 5.4	* 2.3	* 3.5	* 4.6	19.6
Travel/holiday/leisure activity	* 2.6	* 1.6	* 3.9	* 3.4	9.1	* 2.1	* 4.6	7.0	34.3
Worked in unpaid voluntary job	* 0.3	* 0.0	* 1.7	* 1.7	* 4.1	* 2.8	* 5.2	6.0	21.8
Other	* 2.3	* 3.1	* 2.3	* 4.8	* 5.4	* 2.8	* 2.1	* 1.8	24.5
<b>Total</b>	<b>274.2</b>	<b>85.3</b>	<b>80.6</b>	<b>89.3</b>	<b>143.8</b>	<b>120.4</b>	<b>184.4</b>	<b>261.2</b>	<b>1,239.2</b>
<b>FEMALES</b>									
Home duties/childcare	14.0	87.3	385.4	316.9	252.1	144.3	151.6	147.8	1,499.4
Attending an educational institution	246.3	55.2	29.9	19.4	8.3	* 1.5	* 1.0	* 0.3	361.9
Retired/voluntarily inactive	* 1.0	* 1.0	* 1.1	* 5.2	26.1	45.6	98.3	130.3	308.7
Own disability/handicap	* 0.0	* 2.6	6.7	8.2	9.6	* 5.5	* 2.0	* 3.1	37.7
Own illness/injury	* 1.2	* 4.2	8.0	21.4	29.7	15.8	10.4	9.6	100.2
Looking after ill/disabled person	* 0.0	* 0.8	* 2.3	7.4	21.8	12.9	7.5	8.9	61.6
Travel/holiday/leisure activity	* 1.2	* 2.5	* 4.1	* 3.7	* 4.4	* 4.5	7.8	* 5.2	33.3
Worked in unpaid voluntary job	* 0.7	* 0.5	* 1.7	* 2.7	8.7	8.2	8.9	10.7	42.2
Other	* 1.2	* 1.9	* 2.3	* 0.9	* 1.7	* 1.0	* 0.3	* 0.7	10.0
<b>Total</b>	<b>265.6</b>	<b>156.0</b>	<b>441.6</b>	<b>385.6</b>	<b>362.4</b>	<b>239.2</b>	<b>287.8</b>	<b>316.7</b>	<b>2,454.9</b>
<b>PERSONS</b>									
Home duties/childcare	14.0	88.1	393.9	333.7	263.1	154.5	158.0	156.6	1,562.0
Attending an educational institution	511.3	123.0	57.2	32.6	15.1	* 2.6	* 1.7	* 0.7	744.2
Retired/voluntarily inactive	* 2.0	* 2.1	* 3.3	10.0	52.7	93.4	214.0	335.0	712.4
Own disability/handicap	* 1.4	7.7	18.5	22.3	28.0	19.7	12.2	10.1	119.8
Own illness/injury	* 2.8	9.8	29.7	49.5	86.7	52.8	46.5	30.6	308.4
Looking after ill/disabled person	* 0.0	* 1.0	* 3.6	9.8	27.1	15.2	11.0	13.5	81.2
Travel/holiday/leisure activity	* 3.8	* 4.1	8.0	7.0	13.5	6.6	12.4	12.2	67.6
Worked in unpaid voluntary job	* 1.0	* 0.5	* 3.5	* 4.3	12.8	11.0	14.1	16.7	63.9
Other	* 3.5	* 5.0	* 4.6	5.7	7.2	* 3.8	* 2.4	* 2.5	34.5
<b>Total</b>	<b>539.8</b>	<b>241.4</b>	<b>522.2</b>	<b>474.9</b>	<b>506.2</b>	<b>359.7</b>	<b>472.2</b>	<b>577.9</b>	<b>3,694.2</b>

**TABLE 5. PERSONS NOT IN THE LABOUR FORCE WITH MARGINAL ATTACHMENT**  
(\*000)

	Sep. 1992	Sep. 1993	Sep. 1994	Sep. 1995	Sep. 1996	Sep. 1997
<b>MALES</b>						
Wanted to work and were actively looking for work	29.4	28.1	25.1	30.9	28.6	24.4
Wanted to work but were not actively looking for work and were available to start work within four weeks	217.3	219.0	190.2	230.9	233.3	235.1
<i>Main reason for not actively looking for work —</i>						
Discouraged jobseeker	37.8	40.0	31.7	39.0	29.5	39.7
Considered too young or too old by employers	12.0	12.9	17.1	17.2	15.3	18.6
Lacked necessary schooling, training, skills or experience	*1.7	*2.2	*1.5	*2.1	*1.5	*4.5
Difficulties because of language or ethnic background	*1.5	*1.5	*2.6	*0.8	*2.2	*4.1
No jobs in locality or line of work	10.3	11.8	10.9	7.6	8.1	10.0
No jobs at all	8.9	9.4	7.9	*4.0	*2.4	*2.6
Had a job to go to(a)	8.5	8.3	8.6	10.7	13.6	11.5
Personal reasons	146.4	145.3	120.4	144.5	160.2	156.1
Own ill health/physical disability	33.4	36.0	32.8	42.6	49.2	47.0
Attending an educational institution	89.0	88.1	70.3	76.1	90.4	87.8
Had no need to work	11.3	11.0	9.6	7.6	9.5	9.1
Give others a chance	*0.9	*1.0	*0.3	*0.2	*0.5	*0.8
Welfare payments or pension may be affected	*3.6	*5.5	*3.6	*2.7	*4.4	*5.4
Moved house or holidays	5.8	6.4	7.5	6.6	6.2	6.1
Family reasons	8.5	7.4	11.8	12.6	14.8	12.7
Ill health of other than self	*1.8	*2.9	*2.1	*3.3	*2.0	*2.2
Childcare	*2.8	*3.2	*3.3	6.4	8.2	6.2
Other family considerations	*2.8	*2.4	*1.9	*2.0	*4.5	*4.3
No jobs in suitable hours	*2.2	*1.1	*0.2	*2.1	*1.0	*1.4
Other reasons(b)	13.0	16.1	15.4	21.1	11.3	10.4
Did not know	*0.9	*0.9	*2.1	*0.8	*3.0	*3.2
<b>Total</b>	<b>246.7</b>	<b>247.1</b>	<b>215.3</b>	<b>261.8</b>	<b>262.0</b>	<b>259.5</b>
<b>FEMALES</b>						
Wanted to work and were actively looking for work	29.7	30.2	36.2	32.9	29.4	28.9
Wanted to work but were not actively looking for work and were available to start work within four weeks	570.0	630.4	521.8	568.1	588.2	602.0
<i>Main reason for not actively looking for work —</i>						
Discouraged jobseeker	107.8	107.4	74.8	72.9	89.4	78.7
Considered too young or too old by employers	25.2	33.7	24.0	29.6	31.8	30.1
Lacked necessary schooling, training, skills or experience	13.9	18.6	15.8	13.7	17.2	15.4
Difficulties because of language or ethnic background	7.6	6.2	7.7	6.9	10.4	12.2
No jobs in locality or line of work	33.3	31.3	18.3	17.8	20.3	16.2
No jobs at all	27.9	17.6	9.0	*5.0	9.8	*4.8
Had a job to go to(a)	16.3	13.5	17.9	22.7	14.8	21.6
Personal reasons	172.5	193.4	161.3	178.8	166.9	188.0
Own ill health/physical disability/pregnancy	38.1	43.4	49.3	43.8	44.3	54.3
Attending an educational institution	79.3	90.8	68.8	78.0	76.9	84.7
Had no need to work	30.7	32.8	20.7	29.7	26.1	25.2
Give others a chance	6.8	6.6	*4.0	*3.3	*3.6	*3.4
Welfare payments or pension may be affected	10.0	8.8	9.4	10.9	6.4	8.9
Moved house or holidays	7.6	11.1	9.1	13.1	9.6	11.5
Family reasons	241.0	275.5	237.9	257.4	279.8	273.8
Ill health of other than self	12.1	16.5	16.1	19.3	20.7	14.5
Childcare	200.1	213.9	170.9	185.3	192.0	200.2
Other family considerations	28.8	45.2	51.0	52.7	67.1	59.2
No jobs in suitable hours	10.6	6.9	7.4	7.1	8.8	6.8
Other reasons(b)	18.0	26.9	17.1	25.5	20.9	24.9
Did not know	*3.9	6.8	*5.3	*3.6	7.6	8.2
<b>Total</b>	<b>599.7</b>	<b>660.7</b>	<b>558.0</b>	<b>601.0</b>	<b>617.6</b>	<b>630.9</b>



**TABLE 5. PERSONS NOT IN THE LABOUR FORCE WITH MARGINAL ATTACHMENT**  
(\*000) — *continued*

	<i>Sep.</i> <i>1992</i>	<i>Sep.</i> <i>1993</i>	<i>Sep.</i> <i>1994</i>	<i>Sep.</i> <i>1995</i>	<i>Sep.</i> <i>1996</i>	<i>Sep.</i> <i>1997</i>
<b>PERSONS</b>						
Wanted to work and were actively looking for work	59.1	58.3	61.4	63.8	58.0	53.3
Wanted to work but were not actively looking for work and were available to start work within four weeks	787.3	849.5	712.0	799.0	821.5	837.2
<i>Main reason for not actively looking for work —</i>						
Discouraged jobseeker	145.6	147.4	106.5	111.9	118.9	118.4
Considered too young or too old by employers	38.1	50.8	41.2	50.4	47.1	48.7
Lacked necessary schooling, training, skills or experience	16.1	20.1	17.9	16.1	18.7	19.9
Difficulties because of language or ethnic background	9.1	8.8	8.5	8.2	12.6	16.3
No jobs in locality or line of work	45.1	42.2	25.9	28.3	28.4	26.2
No jobs at all	37.3	25.5	13.0	8.8	12.2	7.4
Had a job to go to(a)	24.9	21.9	26.6	33.4	28.3	33.0
Personal reasons	318.9	338.7	281.7	323.4	327.1	344.1
Own ill health/physical disability/pregnancy	71.5	79.5	82.2	86.3	93.5	101.3
Attending an educational institution	168.3	178.8	139.1	154.0	167.3	172.5
Had no need to work	41.7	42.4	28.3	43.0	35.6	34.3
Give others a chance	7.8	6.9	*4.2	*4.2	*4.2	*4.2
Welfare payments or pension may be affected	15.5	12.4	12.1	15.8	10.7	14.3
Moved house or holidays	14.0	18.6	15.7	20.0	15.8	17.5
Family reasons	249.5	282.9	249.7	270.0	294.6	286.5
Ill health of other than self	15.0	18.6	19.4	22.3	22.8	16.7
Childcare	203.3	217.2	177.3	192.7	200.2	206.4
Other family considerations	31.2	47.1	53.0	55.1	71.6	63.4
No jobs in suitable hours	12.8	8.0	7.6	9.3	9.8	8.3
Other reasons(b)	31.0	43.0	32.5	46.6	32.2	35.3
Did not know	*4.7	7.7	7.4	*4.4	10.6	11.4
<b>Total</b>	<b>846.4</b>	<b>907.8</b>	<b>773.3</b>	<b>862.8</b>	<b>879.6</b>	<b>890.5</b>

(a) Includes persons who had a job but, up to the end of the reference week, had been away from work without pay for four weeks or longer and had not been actively looking for work. (b) Includes 'on a job-related training program' in the 1994 to 1997 surveys.

**TABLE 6. PERSONS marginally attached to the labour force: INTENTION TO ENTER THE LABOUR FORCE ('000)**

	<i>Intention to enter the labour force in the next twelve months</i>				<i>Full time or part time preference</i>		<i>Total(a)</i>	<i>%</i>
	<i>Intended to enter</i>	<i>Might enter</i>	<i>Did not intend to enter</i>	<i>Did not know</i>	<i>Full time</i>	<i>Part time</i>		
<b>MALES</b>								
Wanted to work and were actively looking for work	24.4	..	..	..	13.9	8.6	24.4	..
Were available to start work within four weeks	14.6	..	..	..	7.2	5.9	14.6	..
Were not available to start work within four weeks	9.8	..	..	..	6.7	* 2.7	9.8	..
Wanted to work but were not actively looking for work and were available to start work within four weeks	140.5	34.0	49.6	11.1	88.8	98.8	235.1	100.0
<i>Main reason for not actively looking for work —</i>								
Discouraged jobseeker	18.4	6.0	11.9	* 3.4	9.9	14.0	39.7	16.9
Considered too young or too old by employers	* 4.8	* 2.9	9.2	* 1.7	* 2.4	* 5.6	18.6	7.9
Lacked necessary schooling, training, skills or experience	* 2.6	* 0.8	* 0.6	* 0.5	* 1.4	* 2.3	* 4.5	* 1.9
Difficulties with language or ethnic background	* 3.0	* 0.6	* 0.0	* 0.4	* 2.8	* 0.0	* 4.0	* 1.7
No jobs	8.0	* 1.7	* 2.1	* 0.8	* 3.3	6.1	12.6	5.4
Had a job to go to(b)	9.8	* 0.4	* 0.7	* 0.6	7.8	* 3.3	11.5	4.9
Personal reasons	93.1	23.6	33.8	5.7	56.6	72.6	156.1	66.4
Own ill health/physical disability	19.6	9.0	16.3	* 2.1	19.6	10.9	47.0	20.0
Attending an educational institution	63.4	11.1	9.9	* 3.4	32.2	52.4	87.8	37.3
Other personal reasons	10.0	* 3.6	7.6	* 0.2	* 4.7	9.4	21.3	9.1
Family reasons	7.9	* 2.6	* 1.3	* 0.8	6.7	* 4.6	12.7	5.4
Ill health of other than self	* 0.5	* 1.0	* 0.7	* 0.0	* 0.6	* 0.8	* 2.2	* 0.9
Childcare	* 4.3	* 0.7	* 0.6	* 0.5	* 4.1	* 1.6	6.2	2.6
Other family considerations	* 3.0	* 0.9	* 0.0	* 0.3	* 2.0	* 2.1	* 4.3	* 1.8
No jobs in suitable hours	* 1.0	* 0.0	* 0.4	* 0.0	* 0.4	* 0.6	* 1.4	* 0.6
Other reasons	7.7	* 0.8	* 1.4	* 0.5	* 5.3	* 2.7	10.4	4.4
Did not know	* 2.5	* 0.7	* 0.0	* 0.0	* 2.2	* 1.0	* 3.2	* 1.4
<b>Total</b>	<b>164.9</b>	<b>34.0</b>	<b>49.6</b>	<b>11.1</b>	<b>102.7</b>	<b>107.4</b>	<b>259.5</b>	<b>..</b>
<b>FEMALES</b>								
Wanted to work and were actively looking for work	28.9	..	..	..	10.1	16.8	28.9	..
Were available to start work within four weeks	21.1	..	..	..	6.6	13.1	21.1	..
Were not available to start work within four weeks	7.8	..	..	..	* 3.5	* 3.6	7.8	..
Wanted to work but were not actively looking for work and were available to start work within four weeks	293.1	110.4	170.1	28.4	102.8	401.1	602.0	100.0
<i>Main reason for not actively looking for work —</i>								
Discouraged jobseeker	33.0	15.3	27.1	* 3.3	13.5	37.3	78.7	13.1
Considered too young or too old by employers	6.0	6.7	15.8	* 1.6	* 2.4	12.7	30.1	5.0
Lacked necessary schooling, training, skills or experience	8.2	* 2.1	* 3.9	* 1.2	* 3.4	7.8	15.4	2.6
Difficulties with language or ethnic background	7.1	* 1.6	* 3.5	* 0.0	* 4.3	* 4.2	12.2	2.0
No jobs	11.6	* 5.0	* 3.8	* 0.5	* 3.3	12.7	20.9	3.5
Had a job to go to(b)	17.1	* 1.4	* 1.1	* 1.9	6.6	14.2	21.6	3.6
Personal reasons	107.3	27.0	47.2	6.5	42.0	115.4	188.0	31.2
Own ill health/physical disability	26.6	8.4	16.7	* 2.7	6.8	33.9	54.3	9.0
Attending an educational institution	63.3	9.7	10.6	* 1.1	28.0	53.3	84.7	14.1
Other personal reasons	17.4	9.0	19.9	* 2.7	7.1	28.2	49.0	8.1
Family reasons	110.5	61.6	87.0	14.7	34.9	205.4	273.8	45.5
Ill health of other than self	* 4.3	* 4.9	* 3.9	* 1.4	* 0.7	9.9	14.5	2.4
Childcare	83.3	42.3	64.1	10.5	28.8	150.7	200.2	33.3
Other family considerations	23.0	14.3	19.0	* 2.9	* 5.4	44.7	59.1	9.8
No jobs in suitable hours	* 4.5	* 2.1	* 0.0	* 0.2	* 0.6	6.2	6.8	1.1
Other reasons	15.7	* 2.5	5.8	* 1.0	* 4.4	17.0	24.9	4.1
Did not know	* 5.0	* 0.4	* 1.9	* 0.9	* 0.9	* 5.6	8.2	1.4
<b>Total</b>	<b>322.0</b>	<b>110.4</b>	<b>170.1</b>	<b>28.4</b>	<b>112.9</b>	<b>417.9</b>	<b>630.9</b>	<b>..</b>

TABLE 6. PERSONS marginally attached to the labour force: intention to enter the labour force ('000)—continued

	Intention to enter the labour force in the next twelve months				Full time or part time preference			%
	Intended to enter	Might enter	Did not intend to enter	Did not know	Full time	Part time	Total(a)	
PERSONS								
Wanted to work and were actively looking for work	53.3	..	..	..	24.0	25.4	53.3	..
Were available to start work within four weeks	35.7	..	..	..	13.8	19.1	35.7	..
Were not available to start work within four weeks	17.6	..	..	..	10.2	6.3	17.6	..
Wanted to work but were not actively looking for work and were available to start work within four weeks	433.6	144.4	219.7	39.5	191.6	499.9	837.2	100.0
<i>Main reason for not actively looking for work —</i>								
Discouraged jobseeker	51.4	21.3	39.0	6.7	23.4	51.3	118.4	14.1
Considered too young or too old by employers	10.8	9.5	25.1	* 3.3	* 4.8	18.2	48.7	5.8
Lacked necessary schooling, training, skills or experience	10.8	* 2.9	* 4.5	* 1.7	* 4.8	10.1	19.9	2.4
Difficulties with language or ethnic background	10.2	* 2.1	* 3.5	* 0.4	7.1	* 4.2	16.3	1.9
No jobs	19.6	6.7	5.9	* 1.3	6.6	18.8	33.5	4.0
Had a job to go to(b)	27.0	* 1.8	* 1.8	* 2.5	14.4	17.4	33.0	3.9
Personal reasons	200.4	50.6	81.0	12.2	98.5	188.0	344.1	41.1
Own ill health/physical disability	46.2	17.4	33.0	* 4.8	26.5	44.8	101.3	12.1
Attending an educational institution	126.8	20.7	20.5	* 4.5	60.2	105.6	172.5	20.6
Other personal reasons	27.4	12.5	27.5	* 2.9	11.8	37.6	70.3	8.4
Family reasons	118.4	64.3	88.4	15.5	41.6	209.9	286.5	34.2
Ill health of other than self	* 4.8	5.9	* 4.6	* 1.4	* 1.3	10.7	16.7	2.0
Childcare	87.6	43.1	64.8	10.9	32.9	152.4	206.4	24.7
Other family considerations	26.0	15.3	19.0	* 3.2	7.4	46.8	63.4	7.6
No jobs in suitable hours	* 5.5	* 2.1	* 0.4	* 0.2	* 1.0	6.8	8.3	1.0
Other reasons	23.4	* 3.2	7.2	* 1.5	9.7	19.8	35.3	4.2
Did not know	7.6	* 1.1	* 1.9	* 0.9	* 3.0	6.6	11.4	1.4
<b>Total</b>	<b>486.9</b>	<b>144.4</b>	<b>219.7</b>	<b>39.5</b>	<b>215.6</b>	<b>525.3</b>	<b>890.5</b>	<b>..</b>

(a) Includes those persons who had 'no preference' to full-time or part-time work. (b) Includes persons who had a job but, up to the end of the reference week, had been away from work without pay for four weeks or longer and had not been actively looking for work.

**TABLE 7. DISCOURAGED JOBSEEKERS  
(<sup>'000</sup>)**

	Sep. 1992	Sep. 1993	Sep. 1994	Sep. 1995	Sep. 1996	Sep. 1997
<b>MALES</b>						
<i>Age group (years) —</i>						
15-19	*4.2	5.8	*3.0	*3.6	*2.1	*3.9
20-24	*2.0	*3.3	*1.6	*1.3	*1.2	*2.3
25-34	*2.2	*3.6	*1.9	*2.5	*0.7	*0.9
35-44	*4.7	*2.5	*0.9	*2.4	*2.4	*3.3
45-54	*5.1	*3.3	*1.1	*3.3	*2.4	6.9
55-59	*4.0	*4.5	*4.8	*3.2	*2.5	*4.6
60-64	8.9	10.0	8.8	12.9	10.7	9.1
65-69	6.6	7.1	9.6	9.7	7.4	8.8
<i>Whether looked for work in the last twelve months —</i>						
Had looked for work	19.0	19.8	13.8	18.1	9.9	16.1
Less than 13 weeks ago	13.8	16.6	9.9	13.3	7.3	11.7
13 to 25 weeks ago	*1.3	*2.0	*1.4	*1.9	*0.6	*2.1
26 to 52 weeks ago	*4.0	*1.3	*2.5	*2.9	*2.1	*2.3
Had not looked for work	18.8	20.2	17.9	20.9	19.5	23.7
<i>Whether intended to enter the labour force in the next twelve months —</i>						
Intended to enter(a)	27.5	29.5	17.8	22.9	15.6	24.4
Did not intend to enter(b)	10.3	10.6	13.9	16.1	13.9	15.3
<i>Time since last job —</i>						
Had had a job	33.7	34.6	28.3	35.1	26.8	33.6
Under 12 months	9.3	9.2	*4.9	6.7	*4.1	*4.0
1 and under 3 years	11.3	12.8	10.3	8.9	6.2	7.4
3 and under 5 years	5.8	5.0	5.9	7.4	6.7	8.8
5 and under 10 years	*4.5	5.9	*5.2	7.4	7.1	9.2
10 and under 20 years	*1.9	*1.7	*2.0	*2.8	*2.4	*3.3
20 years or more	*1.0	*0.0	*0.0	*1.7	*0.4	*0.9
Had never had a job	*4.1	5.4	*3.3	*3.9	*2.7	6.2
<b>Total</b>	<b>37.8</b>	<b>40.0</b>	<b>31.7</b>	<b>39.0</b>	<b>29.5</b>	<b>39.7</b>
<b>FEMALES</b>						
<i>Age group (years) —</i>						
15-19	6.8	*2.4	*3.2	*1.9	*3.5	*3.1
20-24	*4.2	*2.6	*3.3	*0.4	*3.2	*3.4
25-34	13.4	13.0	7.8	11.5	9.9	11.3
35-44	28.7	29.0	18.1	16.1	21.0	12.8
45-54	27.0	28.0	20.5	19.4	23.1	18.4
55-59	12.4	17.8	8.3	10.7	11.2	13.1
60-64	7.6	8.5	8.0	8.2	9.6	9.4
65-69	7.7	6.2	5.7	*4.8	7.9	7.1
<i>Whether looked for work in the last twelve months —</i>						
Had looked for work	36.9	32.8	21.0	25.4	27.8	23.7
Less than 13 weeks ago	28.8	25.5	15.2	19.6	21.7	17.0
13 to 25 weeks ago	*2.6	*2.8	*3.6	*1.0	*2.8	*2.5
26 to 52 weeks ago	5.6	*4.5	*2.2	*4.9	*3.3	*4.2
Had not looked for work	70.9	74.6	53.9	47.5	61.6	55.0
<i>Whether intended to enter the labour force in the next twelve months —</i>						
Intended to enter(a)	67.2	65.6	43.0	40.4	56.0	48.3
Did not intend to enter(b)	40.7	41.7	31.8	32.5	33.4	30.4
<i>Time since last job —</i>						
Had had a job	98.4	100.3	68.5	67.5	79.2	67.2
Under 12 months	15.5	13.9	6.8	8.8	7.5	*4.0
1 and under 3 years	24.4	20.1	12.9	*4.6	14.5	13.8
3 and under 5 years	11.1	15.2	9.4	13.7	11.9	12.2
5 and under 10 years	20.3	21.2	17.7	15.6	21.0	15.9
10 and under 20 years	17.9	19.0	12.1	15.3	15.5	13.8
20 years or more	9.2	10.9	9.6	9.7	8.7	7.5
Had never had a job	9.5	7.1	6.3	5.4	10.3	11.5
<b>Total</b>	<b>107.8</b>	<b>107.4</b>	<b>74.8</b>	<b>72.9</b>	<b>89.4</b>	<b>78.7</b>

**TABLE 7. DISCOURAGED JOBSEEKERS**  
(\*000) — *continued*

	Sep. 1992	Sep. 1993	Sep. 1994	Sep. 1995	Sep. 1996	Sep. 1997
PERSONS						
<i>Age group (years) —</i>						
15-19	11.1	8.2	6.2	*5.5	5.7	7.0
20-24	6.2	5.7	*4.9	*1.7	*4.4	5.7
25-34	15.6	16.7	9.7	14.1	10.6	12.2
35-44	33.4	31.4	19.0	18.5	23.4	16.2
45-54	32.2	31.3	21.6	22.7	25.5	25.3
55-59	16.4	22.3	13.1	13.9	13.6	17.7
60-64	16.4	18.5	16.8	21.0	20.3	18.5
65-69	14.3	13.2	15.2	14.6	15.3	15.9
<i>Whether looked for work in the last twelve months —</i>						
Had looked for work	56.0	52.6	34.8	43.5	37.7	39.8
Less than 13 weeks ago	42.5	42.0	25.1	32.9	29.0	28.6
13 to 25 weeks ago	*3.9	*4.8	5.0	*2.9	*3.4	*4.6
26 to 52 weeks ago	9.5	5.8	*4.7	7.7	*5.4	6.5
Had not looked for work	89.6	94.8	71.8	68.4	81.2	78.7
<i>Whether intended to enter the labour force in the next twelve months —</i>						
Intended to enter(a)	94.7	95.1	60.8	63.3	71.6	72.7
Did not intend to enter(b)	51.0	52.3	45.7	48.6	47.3	45.7
<i>Time since last job —</i>						
Had had a job	132.1	134.9	96.9	102.6	106.0	100.8
Under 12 months	24.7	23.1	11.7	15.5	11.5	8.0
1 and under 3 years	35.7	32.9	23.2	13.5	20.7	21.1
3 and under 5 years	16.8	20.2	15.3	21.1	18.6	21.0
5 and under 10 years	24.8	27.0	22.9	23.0	28.2	25.1
10 and under 20 years	19.8	20.7	14.2	18.1	17.9	17.2
20 years or more	10.2	10.9	9.6	11.4	9.1	8.4
Had never had a job	13.6	12.5	9.6	9.3	13.0	17.7
<b>Total</b>	<b>145.6</b>	<b>147.4</b>	<b>106.5</b>	<b>111.9</b>	<b>118.9</b>	<b>118.4</b>

(a) Includes 'might enter the labour force'. (b) Includes 'did not know'.

**TABLE 8. PERSONS NOT IN THE LABOUR FORCE FOR CHILDCARE REASONS WHO WANTED TO WORK BUT WERE NOT ACTIVELY LOOKING FOR WORK ('000)**

	<i>Not actively looking for work but available to start within four weeks</i>		<i>Not actively looking for work and not available to start work within four weeks for childcare reasons</i>	
	<i>Childcare main reason for not actively looking for work</i>	<i>Total(a)</i>		<i>Total</i>
<b>FEMALES</b>				
<i>Age group (years) —</i>				
15-19	* 2.7	* 2.8	* 1.5	* 4.3
20-24	29.4	30.8	5.7	36.5
25-34	106.2	119.4	39.3	158.7
35-44	55.2	65.3	14.0	79.4
45-54	6.5	8.5	* 0.4	8.8
55-69	* 0.2	* 0.2	* 0.0	* 0.2
<i>Age of youngest child (years) —</i>				
0-2	106.3	113.5	46.0	159.5
3-5	56.2	64.8	9.4	74.2
6-11	35.1	44.9	* 4.6	49.5
12-14	* 2.0	* 3.0	* 0.0	* 3.0
Not coded(b)	* 0.6	* 0.9	* 1.0	* 1.9
<i>Relationship in household —</i>				
Family member	195.1	220.8	59.4	280.2
Wife	140.2	156.8	49.5	206.3
With dependants	140.2	156.8	49.3	206.1
Without dependants	* 0.0	* 0.0	* 0.2	* 0.2
Lone parent	54.8	64.1	9.9	73.9
Not determined	* 5.2	6.3	* 1.5	7.8
<i>Birthplace —</i>				
Born in Australia	147.1	169.4	39.7	209.1
Born outside Australia	53.2	57.7	21.2	78.9
Born in main English speaking countries	16.1	16.9	5.7	22.6
Born in other countries	37.1	40.8	15.5	56.4
<b>Total</b>	<b>200.2</b>	<b>227.1</b>	<b>60.9</b>	<b>288.0</b>
<b>PERSONS</b>				
<i>Age group (years) —</i>				
15-19	* 2.7	* 2.8	* 1.5	* 4.3
20-24	29.4	30.8	5.7	36.5
25-34	107.9	121.6	39.6	161.2
35-44	58.3	68.8	14.7	83.5
45-54	7.5	9.9	* 0.4	10.3
55-69	* 0.6	* 0.6	* 0.0	* 0.6
<i>Age of youngest child (years) —</i>				
0-2	109.0	116.1	46.4	162.5
3-5	57.2	66.2	10.1	76.3
6-11	37.7	48.3	* 4.6	52.9
12-14	* 2.0	* 3.0	* 0.0	* 3.0
Not coded(b)	* 0.6	* 0.9	* 1.0	* 1.9
<i>Relationship in household —</i>				
Family member	201.2	228.3	60.5	288.7
Wife	143.5	160.4	50.1	210.5
With dependants	143.5	160.4	49.9	210.3
Without dependants	* 0.0	* 0.0	* 0.2	* 0.2
Lone parent	57.8	67.8	10.4	78.3
Non-family member	* 0.0	* 0.0	* 0.0	* 0.0
Not determined	* 5.2	6.3	* 1.5	7.8
<i>Birthplace —</i>				
Born in Australia	150.6	173.3	40.8	214.0
Born outside Australia	55.8	61.3	21.2	82.5
Born in main English speaking countries	16.5	17.3	5.7	23.0
Born in other countries	39.3	44.0	15.5	59.5
<b>Total</b>	<b>206.4</b>	<b>234.5</b>	<b>62.0</b>	<b>296.5</b>

(a) Includes persons not actively looking for work for all other reasons (b) Not coded for visitors to a private dwelling.

**TABLE 9. PERSONS NOT IN THE LABOUR FORCE WHO PREVIOUSLY HAD A JOB  
(<sup>'000</sup>)**

	<i>Last job less than 20 years ago</i>						<i>Last job 20 or more years ago</i>	<i>Total</i>
	<i>Status in employment in last job</i>			<i>Full-time or part-time worker in last job</i>				
	<i>Emp- loyees</i>	<i>Own account workers(a)</i>	<i>Emp- loyers</i>	<i>Full-time</i>	<i>Part-time</i>	<i>Total(b)</i>		
<b>MALES</b>								
<i>Reason for ceasing last job —</i>								
Job loser	438.0	47.2	15.6	427.4	64.9	500.7	22.5	523.3
Retrenched	163.0	* 4.9	* 1.0	143.5	23.9	168.9	* 2.1	171.0
Job was temporary or seasonal and did not leave to return to studies	29.7	* 2.7	* 0.2	14.2	16.3	32.6	* 0.0	32.6
Own ill health/injury	241.4	30.0	11.0	255.2	23.3	282.4	20.4	302.8
Business closed down for economic reasons	* 3.8	9.6	* 3.4	14.5	* 1.3	16.9	* 0.0	16.9
Job leaver	366.8	35.2	17.0	333.8	81.4	419.0	17.1	436.1
Unsatisfactory work arrangements	21.1	* 0.2	* 0.0	12.8	8.1	21.2	* 0.4	21.7
Job was temporary or seasonal and left to return to studies	32.9	* 0.4	* 0.0	15.4	17.0	33.3	* 0.0	33.3
Retired/did not want to work any longer	166.9	19.7	9.4	182.8	12.0	195.9	* 4.1	200.0
Own disability/handicap	35.5	* 2.5	* 2.0	35.5	* 4.2	39.9	8.7	48.6
Returned to studies	49.1	* 2.0	* 0.0	26.9	23.6	51.1	* 0.0	51.1
Pregnancy/to have children	* 0.0	* 0.0	* 0.0	* 0.0	* 0.0	* 0.0	* 0.3	* 0.3
To look after family, house or someone else	17.6	* 2.0	* 0.8	17.8	* 2.6	20.4	* 1.9	22.3
Have holiday/moved house/ spouse transferred	24.1	* 1.9	* 0.5	17.8	8.3	26.5	* 0.0	26.5
Business closed down for other reasons	* 3.6	* 5.2	* 4.1	12.2	* 0.5	12.9	* 0.4	13.3
Other	15.8	* 1.4	* 0.2	12.3	* 5.1	17.4	* 0.8	18.3
<i>Occupation in last job —</i>								
Managers and administrators	35.3	10.2	* 4.0	47.9	* 1.6	49.5	..	..
Professionals	73.6	9.6	* 2.5	71.3	14.1	85.8	..	..
Associate professionals	59.9	11.5	8.5	75.0	* 4.5	79.8	..	..
Tradespersons and related workers	155.6	24.7	10.7	171.4	16.5	191.0	..	..
Advanced clerical and service workers	* 5.1	* 0.5	* 0.0	* 4.7	* 0.9	5.6	..	..
Intermediate clerical, sales and service workers	73.1	* 2.1	* 0.8	63.3	12.2	76.1	..	..
Intermediate production and transport workers	155.7	11.4	* 2.3	146.8	21.4	169.5	..	..
Elementary clerical, sales and service workers	71.5	* 4.6	* 0.8	43.8	32.0	76.9	..	..
Labourers and related workers	174.8	7.7	* 3.0	137.0	43.2	185.5	..	..
<i>Whether looked for work in the last twelve months —</i>								
Had looked for work	112.1	7.0	* 2.0	82.5	36.2	121.0	* 0.6	121.6
Less than 13 weeks ago	70.7	* 3.7	* 1.8	51.4	23.0	76.3	* 0.2	76.4
13 to 25 weeks ago	14.5	* 1.2	* 0.1	10.9	* 4.9	15.8	* 0.2	16.1
26 to 52 weeks ago	26.9	* 2.1	* 0.0	20.2	8.3	28.9	* 0.2	29.1
Had not looked for work	692.6	75.4	30.6	678.7	110.1	798.7	39.0	837.7
<i>Total</i>	<i>804.7</i>	<i>82.4</i>	<i>32.6</i>	<i>761.3</i>	<i>146.3</i>	<i>919.7</i>	<i>39.6</i>	<i>959.3</i>

TABLE 9. PERSONS NOT IN THE LABOUR FORCE WHO PREVIOUSLY HAD A JOB  
(\*000)—continued

	Last job less than 20 years ago						Last job 20 or more years ago	Total
	Status in employment in last job			Full-time or part-time worker in last job				
	Emp- loyees	Own account workers(a)	Emp- loyers	Full-time	Part-time	Total(b)		
<b>FEMALES</b>								
<i>Reason for ceasing last job —</i>								
Job loser	490.3	29.9	11.1	281.0	237.5	531.3	39.6	570.9
Retrenched	203.5	6.8	* 1.4	114.0	94.7	211.8	13.5	225.2
Job was temporary or seasonal and did not leave to return to studies	87.1	* 2.0	* 0.0	29.2	56.6	89.0	* 2.1	91.1
Own ill health/injury	191.1	9.9	* 4.4	125.1	75.5	205.4	22.3	227.7
Business closed down for economic reasons	8.6	11.2	* 5.3	12.7	10.7	25.1	* 1.7	26.9
Job leaver	1,036.4	52.0	21.0	661.9	432.3	1,109.5	382.2	1,491.6
Unsatisfactory work arrangements	60.2	* 0.6	* 0.2	24.5	35.3	60.9	* 2.5	63.4
Job was temporary or seasonal and left to return to studies	22.9	* 0.1	* 0.0	7.7	14.2	23.0	* 0.0	23.0
Retired/did not want to work any longer	205.1	12.5	* 5.5	133.5	86.7	223.2	39.9	263.1
Own disability/handicap	18.6	* 0.5	* 0.7	13.1	6.6	19.8	6.0	25.8
Returned to studies	44.8	* 1.3	* 0.0	18.1	27.6	46.1	* 0.3	46.4
To get married	26.1	* 0.3	* 0.2	22.7	* 3.8	26.6	103.3	129.9
Pregnancy/to have children	380.8	8.0	* 0.6	261.8	123.7	389.5	141.4	530.9
To look after family, house or someone else	115.7	7.2	* 1.7	67.3	55.2	124.6	64.1	188.7
Have holiday/moved house/ spouse transferred	119.1	* 3.7	* 2.5	67.9	56.2	125.3	16.5	141.8
Business closed down for other reasons	9.7	14.7	7.9	24.1	7.7	32.2	* 3.5	35.7
Other	33.5	* 3.1	* 1.8	21.2	15.4	38.4	* 4.7	43.1
<i>Occupation in last job —</i>								
Managers and administrators	11.9	7.6	* 1.7	17.2	* 3.6	21.2	..	..
Professionals	166.4	7.7	* 0.4	105.5	65.2	174.5	..	..
Associate professionals	67.7	15.3	18.0	77.6	22.2	101.0	..	..
Tradespersons and related workers	59.8	5.9	* 1.7	44.1	21.5	67.4	..	..
Advanced clerical and service workers	125.2	7.3	* 3.6	94.1	42.0	136.1	..	..
Intermediate clerical, sales and service workers	388.2	8.4	* 1.3	226.1	168.2	397.9	..	..
Intermediate production and transport workers	102.0	* 5.1	* 0.5	75.7	30.2	107.6	..	..
Elementary clerical, sales and service workers	299.9	14.5	* 3.4	146.0	166.7	317.9	..	..
Labourers and related workers	305.6	10.0	* 1.5	156.5	150.2	317.2	..	..
<i>Whether looked for work in the last twelve months —</i>								
Had looked for work	187.7	6.3	* 1.2	93.2	97.9	195.1	* 3.5	198.7
Less than 13 weeks ago	131.6	* 4.5	* 1.1	66.8	67.8	137.2	* 1.9	139.1
13 to 25 weeks ago	20.2	* 0.6	* 0.1	9.5	10.9	20.8	* 0.8	21.6
26 to 52 weeks ago	35.9	* 1.2	* 0.0	16.9	19.2	37.1	* 0.8	37.9
Had not looked for work	1,339.0	75.6	31.0	849.7	571.9	1,445.7	418.2	1,863.8
<b>Total</b>	<b>1,526.7</b>	<b>81.9</b>	<b>32.2</b>	<b>942.9</b>	<b>669.8</b>	<b>1,640.8</b>	<b>421.7</b>	<b>2,062.5</b>



TABLE 9. PERSONS NOT IN THE LABOUR FORCE WHO PREVIOUSLY HAD A JOB  
(<sup>'000</sup>)—continued

	Last job less than 20 years ago						Last job 20 or more years ago	Total
	Status in employment in last job			Full-time or part-time worker in last job				
	Emp- loyees	Own account workers(a)	Emp- loyers	Full-time	Part-time	Total(b)		
	PERSONS							
<i>Reason for ceasing last job —</i>								
Job loser	928.3	77.1	26.7	708.4	302.4	1,032.1	62.1	1,094.1
Retrenched	366.5	11.7	* 2.4	257.5	118.6	380.6	15.6	396.2
Job was temporary or seasonal and did not leave to return to studies	116.8	* 4.6	* 0.2	43.4	72.9	121.6	* 2.1	123.7
Own ill health/injury	432.5	39.9	15.4	380.2	98.8	487.8	42.7	530.5
Business closed down for economic reasons	12.5	20.9	8.7	27.3	12.1	42.0	* 1.7	43.7
Job leaver	1,403.2	87.2	38.1	995.7	513.7	1,528.4	399.3	1,927.7
Unsatisfactory work arrangements	81.2	* 0.7	* 0.2	37.3	43.4	82.2	* 2.9	85.1
Job was temporary or seasonal and left to return to studies	55.8	* 0.5	* 0.0	23.1	31.1	56.3	* 0.0	56.3
Retired/did not want to work any longer	372.0	32.1	14.9	316.3	98.7	419.1	44.0	463.1
Own disability/handicap	54.1	* 3.0	* 2.6	48.6	10.8	59.7	14.6	74.3
Returned to studies	93.8	* 3.3	* 0.0	45.1	51.2	97.2	* 0.3	97.4
To get married	26.4	* 0.3	* 0.2	23.0	* 3.8	26.8	103.7	130.5
Pregnancy/to have children	380.8	8.0	* 0.6	261.8	123.7	389.5	141.7	531.2
To look after family, house or someone else	133.3	9.2	* 2.5	85.0	57.8	145.0	66.0	211.0
Have holiday/moved house/ spouse transferred	143.2	* 5.6	* 3.0	85.7	64.5	151.8	16.5	168.3
Business closed down for other reasons	13.2	19.9	12.0	36.4	8.1	45.1	* 3.9	49.0
Other	49.3	* 4.4	* 2.0	33.5	20.5	55.8	* 5.6	61.4
<i>Occupation in last job —</i>								
Managers and administrators	47.2	17.8	5.7	65.1	* 5.2	70.7	..	..
Professionals	240.0	17.4	* 2.9	176.8	79.3	260.3	..	..
Associate professionals	127.6	26.8	26.5	152.6	26.6	180.8	..	..
Tradespersons and related workers	215.5	30.6	12.4	215.5	38.1	258.4	..	..
Advanced clerical and service workers	130.3	7.8	* 3.6	98.9	42.9	141.7	..	..
Intermediate clerical, sales and service workers	461.3	10.6	* 2.1	289.4	180.4	473.9	..	..
Intermediate production and transport workers	257.7	16.5	* 2.9	222.5	51.6	277.1	..	..
Elementary clerical, sales and service workers	371.5	19.1	* 4.2	189.8	198.6	394.8	..	..
Labourers and related workers	480.5	17.7	* 4.5	293.5	193.4	502.7	..	..
<i>Whether looked for work in the last twelve months —</i>								
Had looked for work	299.8	13.3	* 3.1	175.7	134.1	316.2	* 4.1	320.3
Less than 13 weeks ago	202.3	8.2	* 2.9	118.2	90.8	213.5	* 2.1	215.6
13 to 25 weeks ago	34.7	* 1.8	* 0.2	20.4	15.8	36.7	* 1.1	37.7
26 to 52 weeks ago	62.8	* 3.3	* 0.0	37.1	27.5	66.0	* 1.0	67.0
Had not looked for work	2,031.7	151.0	61.7	1,528.5	682.0	2,244.3	457.2	2,701.6
<b>Total</b>	<b>2,331.4</b>	<b>164.3</b>	<b>64.8</b>	<b>1,704.1</b>	<b>816.1</b>	<b>2,560.5</b>	<b>461.3</b>	<b>3,021.8</b>

(a) Includes persons who were contributing family workers and unpaid voluntary workers. (b) Includes persons whose full-time or part-time work in their last job varied and those that did not know.

**TABLE 10. POPULATIONS BY STATE OR TERRITORY OF USUAL RESIDENCE  
(\*000)**

	<i>NSW</i>	<i>Vic.</i>	<i>Qld</i>	<i>SA</i>	<i>WA</i>	<i>Tas.</i>	<i>NT</i>	<i>ACT</i>	<i>Aust.</i>
<b>MALES</b>									
<i>Population 1:</i>									
Persons not in the labour force	434.0	309.1	226.7	99.2	102.9	38.1	12.9	16.3	1,239.2
<i>Population 2:</i>									
Persons not in the labour force who wanted to work	109.5	92.3	71.2	29.5	33.2	12.3	5.2	7.4	360.6
<i>Population 3:</i>									
Persons not in the labour force with marginal attachment to the labour force	77.9	64.1	54.7	22.8	22.7	9.6	* 2.1	5.6	259.5
<i>Population 4:</i>									
Persons not in the labour force who wanted to work but were not actively looking for work and were available to start work within four weeks	71.1	57.8	49.4	20.5	20.0	9.1	* 2.1	5.0	235.1
<i>Population 5:</i>									
Persons not in the labour force who were discouraged jobseekers	12.9	12.3	7.1	* 2.0	* 2.6	* 1.9	* 0.4	* 0.6	39.7
<i>Population 6:</i>									
Persons not in the labour force who wanted to work but were not actively looking for work and not available to start work within four weeks	31.6	28.1	16.5	6.8	10.4	2.7	3.1	1.8	101.1
<i>Population 7:</i>									
Persons not in the labour force for childcare reasons who wanted to work but were not actively looking for work	* 4.5	* 1.3	* 0.2	* 1.0	* 1.2	* 0.2	* 0.0	* 0.1	8.5
<i>Population 8:</i>									
Persons not in the labour force who previously had a job	329.4	237.2	180.5	78.6	82.2	29.5	9.5	12.4	959.3

TABLE 10. POPULATIONS BY STATE OR TERRITORY OF USUAL RESIDENCE  
(*'000*)—continued

	<i>NSW</i>	<i>Vic.</i>	<i>Qld</i>	<i>SA</i>	<i>WA</i>	<i>Tas.</i>	<i>NT</i>	<i>ACT</i>	<i>Aust.</i>
	FEMALES								
<i>Population 1:</i> Persons not in the labour force	862.4	606.3	431.8	198.7	231.8	71.8	21.3	30.8	2,454.9
<i>Population 2:</i> Persons not in the labour force who wanted to work	277.3	208.7	152.0	67.4	74.8	25.2	9.6	13.5	828.5
<i>Population 3:</i> Persons not in the labour force with marginal attachment to the labour force	206.6	155.4	116.0	54.4	60.9	19.8	7.2	10.6	630.9
<i>Population 4:</i> Persons not in the labour force who wanted to work but were not actively looking for work and were available to start work within four weeks	198.0	148.8	109.9	52.5	57.1	19.1	6.7	9.9	602.0
<i>Population 5:</i> Persons not in the labour force who were discouraged jobseekers	26.4	20.1	11.6	8.1	8.3	2.3	* 0.5	1.4	78.7
<i>Population 6:</i> Persons not in the labour force who wanted to work but were not actively looking for work and not available to start work within four weeks	70.7	53.3	36.0	13.0	13.8	5.4	* 2.4	2.9	197.6
<i>Population 7:</i> Persons not in the labour force for childcare reasons who wanted to work but were not actively looking for work	105.7	69.4	51.0	20.2	24.3	9.0	4.4	4.0	288.0
<i>Population 8:</i> Persons not in the labour force who previously had a job	696.6	508.7	380.4	172.8	200.0	61.1	17.0	25.8	2,062.5

TABLE 10. POPULATIONS BY STATE OR TERRITORY OF USUAL RESIDENCE  
(*'000*)—continued

	<i>NSW</i>	<i>Vic.</i>	<i>Qld</i>	<i>SA</i>	<i>WA</i>	<i>Tas.</i>	<i>NT</i>	<i>ACT</i>	<i>Aust.</i>
	PERSONS								
<i>Population 1:</i> Persons not in the labour force	1,296.5	915.3	658.5	298.0	334.7	109.9	34.2	47.1	3,694.2
<i>Population 2:</i> Persons not in the labour force who wanted to work	386.8	300.9	223.2	96.9	107.9	37.6	14.9	20.9	1,189.1
<i>Population 3:</i> Persons not in the labour force with marginal attachment to the labour force	284.5	219.5	170.7	77.1	83.6	29.4	9.3	16.2	890.5
<i>Population 4:</i> Persons not in the labour force who wanted to work but were not actively looking for work and were available to start work within four weeks	269.1	206.6	159.3	73.0	77.1	28.3	8.9	15.0	837.2
<i>Population 5:</i> Persons not in the labour force who were discouraged jobseekers	39.3	32.4	18.6	10.2	10.8	4.2	* 0.9	1.9	118.4
<i>Population 6:</i> Persons not in the labour force who wanted to work but were not actively looking for work and not available to start work within four weeks	102.3	81.4	52.5	19.8	24.3	8.2	5.5	4.7	298.7
<i>Population 7:</i> Persons not in the labour force for childcare reasons who wanted to work but were not actively looking for work	110.2	70.8	51.2	21.2	25.4	9.2	4.4	4.1	296.5
<i>Population 8:</i> Persons not in the labour force who previously had a job	1,026.0	745.9	560.9	251.4	282.3	90.6	26.6	38.2	3,021.8

## EXPLANATORY NOTES

### INTRODUCTION

**1** This survey was conducted as a supplement to the Labour Force Survey (LFS). Respondents to the LFS who fell within the scope of the supplementary survey were asked further questions.

**2** For further information about the LFS, see *Labour Force, Australia* (Cat. no. 6203.0). This monthly publication contains information about survey design, sample redesign, scope, coverage and population benchmarks relevant to the monthly LFS, which also apply to supplementary surveys. It also contains definitions of demographic and labour force characteristics and information about telephone interviewing relevant to both the monthly LFS and supplementary surveys.

### SCOPE

**3** In addition to those already excluded from the LFS, there were 75,700 students at boarding schools, patients in hospitals, residents of homes (e.g. retirement homes, homes for the handicapped), and inmates of prisons out of scope of this survey. These persons are excluded from all supplementary surveys.

**4** Also out of scope were some 47,000 persons living in remote and sparsely settled parts of Australia. The exclusion of these persons has only a minor impact on any aggregate estimates that are produced for individual States and Territories.

**5** Persons aged 70 years and over were also excluded from this survey.

### COVERAGE

**6** The estimates in this publication relate to persons covered by the survey in September 1997. In the LFS, coverage rules are applied which aim to ensure that each person is associated with only one dwelling and hence has only one chance of selection. See *Labour Force, Australia* (Cat. no. 6203.0).

### RELIABILITY OF THE ESTIMATES

**7** Estimates in this publication are subject to sampling and non-sampling errors.

- Sampling error is the difference between the published estimate and the value that would have been produced if all dwellings had been included in the survey. For further information on sampling error, refer to the Technical Notes.
- Non-sampling errors are inaccuracies that occur because of imperfections in reporting by respondents and interviewers and errors made in coding and processing data. These inaccuracies may occur in any enumeration, whether it be a full count or a sample. Every effort is made to reduce the non-sampling error to a minimum by careful design of questionnaires, intensive training and supervision of interviewers and efficient processing procedures.

### SEASONAL FACTORS

**8** The estimates are based on information collected in the survey month and, due to seasonal factors, may not be representative of other months of the year.

CHANGES IN  
CLASSIFICATIONS

**9** From August 1996, occupation data are classified according to the second edition of the Australian Standard Classification of Occupation (ASCO SE). For more detailed information see the *Information Paper ASCO — Australian Standard Classification of Occupations* (Cat. no. 1221.0). A concordance between the new and the old versions of ASCO is not yet available.

COMPARABILITY OF TIME  
SERIES

**10** Revisions are made to population benchmarks for the LFS after each five-yearly Census of Population and Housing. The last such revision was made in February 1994 to take account of the results of the 1991 Census of Population and Housing. Estimates from supplementary surveys conducted after February 1994 are therefore based on revised population benchmarks.

**11** Supplementary surveys are not always conducted on the full LFS sample. Apart from the scope exclusions listed on the previous page, since August 1994 the sample for supplementary surveys has been restricted to seven-eighths of the LFS sample. Since it was introduced, this survey has been conducted on various proportional samples and therefore sampling error associated with previous surveys may vary from sampling error for this survey, which was conducted on a seven-eighths sample.

**12** *Persons Not In the Labour Force* surveys conducted up to and including September 1987 included all persons aged 15 years and over. From September 1988, the survey excluded all persons aged 70 years and over.

COMPARABILITY WITH  
MONTHLY LABOUR FORCE  
SURVEY STATISTICS

**13** Due to differences in the scope and sample size of this supplementary survey and that of the LFS, the estimation procedure may lead to some small variations between labour force estimates from this survey and those from the LFS.

**14** Estimates as at September 1997 of:

- the civilian population;
- persons in the labour force (employed and unemployed); and
- persons not in the labour force (State or Territory, sex, relationship in household)

appear in this publication, as well as in the September 1997 edition of *Labour Force, Australia* (Cat. no. 6203.0), released 31 October 1997. Estimates of persons not in the labour force include estimates of persons who are permanently unable to work and persons in institutions (e.g. boarding schools, hospitals, prisons, retirement homes, homes for the handicapped). These estimates were collected in the LFS conducted in September 1997 in regard to persons aged 15 years and over.

COMPARABILITY WITH  
MONTHLY LABOUR FORCE  
SURVEY STATISTICS –

*continued*

**15** The difference between the estimates appearing in each publication is chiefly the result of excluding persons aged 70 years and over from estimates appearing in this supplementary survey publication. This is in line with the scope of this supplementary survey. Over one-quarter (28.6%) of the civilian population aged 15 years and over who were not in the labour force were excluded from answering questions from this supplementary survey because they were aged 70 years and over.

**16** Further information on persons not in the labour force is available in *Labour Force, Australia* (Cat. no. 6203.0). Note that this information refers to all persons aged 15 years and over and includes State capital city breakdowns and attendance at a tertiary institution for those aged 15–24 years.

PREVIOUS SURVEYS

**17** *Persons Not In the Labour Force* was first collected in May 1975 and then in May 1977. The survey was collected twice a year (March and September) from 1979, and annually since 1988. Results of previous surveys have been published in *Persons Not in The Labour Force, Australia* (Cat. no. 6220.0) and the standard data service *Persons Not in The Labour Force* (Cat. no. 6220.0.40.001).

NEXT SURVEY

**18** The ABS plans to conduct this survey again in September 1998.

GENERAL  
ACKNOWLEDGMENT

**19** ABS publications draw extensively on information provided freely by individuals, businesses, governments and other organisations. Their continued cooperation is very much appreciated: without it, the wide range of statistics published by the ABS would not be available. Information received by the ABS is treated in strictest confidence as required by the *Census and Statistics Act 1905*.

RELATED PUBLICATIONS

**20** Other publications which may be of interest include:

- *Job Search Experience of Unemployed Persons, Australia* (Cat. no. 6222.0)
- *Successful and Unsuccessful Job Search Experience, Australia* (Cat. no. 6245.0)
- *Underemployed Workers, Australia* (Cat. no. 6265.0)

**21** Current publications produced by the ABS are listed in the *Catalogue of Publications and Products* (Cat. no. 1101.0). The ABS also issues, on Tuesdays and Fridays, a *Release Advice* (Cat. no. 1105.0) which lists publications to be released in the next few days. The Catalogue and Release Advice are available from any ABS office or from the ABS Information Service on the World Wide Web, <http://www.abs.gov.au>.

## TECHNICAL NOTES

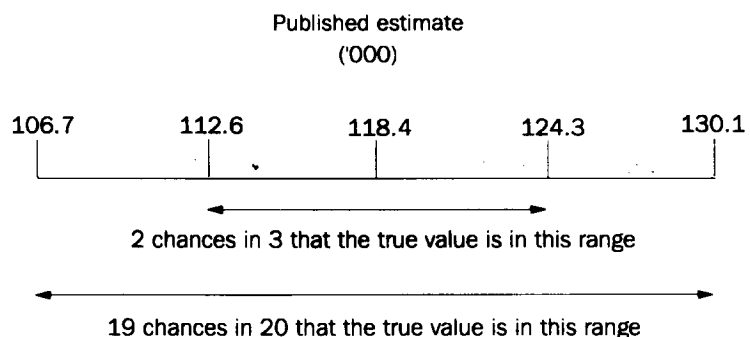
### INTRODUCTION

**1** Since the estimates in these tables are based on information obtained from occupants of a sample of dwellings, they are subject to sampling variability, that is, they may differ from those that would have been produced if all dwellings had been included in the survey. One measure of the likely difference is given by the standard error (SE), which indicates the extent to which an estimate might have varied by chance because only a sample of dwellings was included. There are about two chances in three that a sample estimate will differ by less than one SE from the number that would have been obtained if all dwellings had been included, and about 19 chances in 20 that the difference will be less than two SEs. Another measure of the likely difference is the relative standard error (RSE), which is obtained by expressing the SE as a percentage of the estimate.

**2** SEs for general application are given in table T1. They are averages based on calculations for a limited number of past surveys over a wide range of labour force characteristics and will not give a precise measure of the SE of a particular estimate but they will provide an indication of its magnitude.

### CALCULATION OF STANDARD ERROR

**3** An example of the calculation and the use of SEs in relation to estimates of persons is as follows. Table 2 shows the estimated number of persons in Australia who were discouraged jobseekers was 118,400. Since this estimate is between 100,000 and 150,000 table T1 shows the SE for Australia will be between 5,450 and 6,500 and can be approximated by interpolation as 5,850 (rounded to the nearest 50). Therefore, there are about two chances in three that the value that would have been produced if all dwellings had been included in the survey will fall in the range 112,550 to 124,250 and about 19 chances in 20 that the value will fall within the range 106,700 to 130,100. This example is illustrated in the following diagram.





CALCULATION OF  
STANDARD ERROR –  
*continued*

**4** As can be seen from table T1, the smaller the estimate the higher is the RSE. Very small estimates are thus subject to such high SEs (relative to the size of the estimate) as to detract seriously from their value for most reasonable uses. In these tables, only estimates with RSEs of 25% or less and percentages based on such estimates are considered sufficiently reliable for most purposes. However, estimates and percentages with larger RSEs have been included and are preceded by an asterisk (e.g. \*3.4) to indicate they are subject to high SEs and should be used with caution.

PROPORTIONS AND  
PERCENTAGES

**5** Proportions and percentages formed from the ratio of two estimates are also subject to sampling errors. The size of the error depends on the accuracy of both the numerator and the denominator. A formula to approximate the RSE of a proportion is:

$$RSE(x/y) = \sqrt{[RSE(x)]^2 - [RSE(y)]^2}$$

**6** Considering the example from paragraph 3, of the 118,400 persons who were discouraged jobseekers, 39,700 or 33.5% were males. The SE of 39,700 is approximately 3,650 so the RSE is 9.2%. The RSE for 118,400 is 4.9%. Applying the above formula, the RSE of the proportion is  $\sqrt{(9.2)^2 - (4.9)^2}$  or 7.8%, giving a SE for the proportion (33.5%) of 2.6 percentage points. Therefore, there are about two chances in three that the proportion of discouraged jobseekers who were males was between 30.9% and 36.1% and 19 chances in 20 the proportion was within the range 28.3% to 38.7%.

DIFFERENCES

**7** Published estimates may also be used to calculate the difference between two survey estimates (of number or percentages). Such an estimate is subject to sampling error. The sampling error of the difference between two estimates depends on their SEs and the relationship (correlation) between them. An approximate SE of the difference between two estimates (x-y) may be calculated by the following formula:

$$SE(x-y) = \sqrt{[SE(x)]^2 + [SE(y)]^2}$$

**8** While this formula will only be exact for differences between separate and uncorrelated characteristics or subpopulations it is expected to provide a good approximation for all differences likely to be of interest in these tables.

NON-SAMPLING ERROR

**9** The imprecision due to sampling variability, which is measured by the SE, should not be confused with inaccuracies that may occur because of imperfections in reporting by interviewers and respondents and errors made in coding and processing data. Inaccuracies of this kind are referred to as the non-sampling error, and they may occur in any enumeration, whether it be a full count or a sample. Every effort is made to reduce the non-sampling error to a minimum by careful design of questionnaires, intensive training and supervision of interviewers and efficient operating procedures.

T1 STANDARD ERRORS OF ESTIMATES

Size of Estimate (Persons)	NSW no.	Vic. no.	Qld no.	SA no.	WA no.	Tas. no.	NT no.	ACT no.	Aust. no.	RSE %
100	..	..	..	..	..	110	..	100	..	..
200	..	..	240	210	230	160	240	130	230	115.0
300	380	340	300	260	290	200	290	160	290	96.7
500	490	450	390	340	370	260	370	200	380	76.0
700	580	540	460	400	430	310	430	240	460	65.7
1 000	700	650	550	480	510	370	500	280	560	56.0
1 500	850	790	670	580	620	440	610	330	700	46.7
2 000	980	910	770	660	710	500	690	380	820	41.0
2 500	1 090	1 020	850	730	780	550	760	420	920	36.8
3 000	1 190	1 110	930	800	850	590	830	450	1 020	34.0
3 500	1 280	1 200	1 000	860	910	630	890	480	1 100	31.4
4 000	1 370	1 280	1 060	910	970	670	950	510	1 180	29.5
5 000	1 500	1 400	1 200	1 000	1 050	750	1 050	550	1 300	26.0
7 000	1 750	1 650	1 350	1 150	1 250	850	1 250	650	1 550	22.1
10 000	2 100	1 950	1 600	1 350	1 450	950	1 450	750	1 850	18.5
15 000	2 500	2 350	1 950	1 600	1 700	1 100	1 750	850	2 300	15.3
20 000	2 850	2 650	2 200	1 800	1 950	1 200	2 000	950	2 600	13.0
30 000	3 400	3 150	2 600	2 150	2 300	1 350	2 400	1 150	3 150	10.5
40 000	3 800	3 600	2 950	2 400	2 600	1 500	2 750	1 250	3 650	9.1
50 000	4 200	3 950	3 200	2 650	2 850	1 600	3 050	1 350	4 000	8.0
100 000	5 550	5 250	4 250	3 450	3 700	1 950	4 250	1 750	5 450	5.5
150 000	6 550	6 150	5 000	4 000	4 350	2 150	5 150	2 050	6 500	4.3
200 000	7 300	6 850	5 600	4 450	4 850	2 300	5 900	2 250	7 350	3.7
300 000	8 550	8 000	6 550	5 150	5 650	2 500	..	2 550	8 700	2.9
500 000	10 300	9 650	7 900	6 200	6 800	2 750	..	..	10 700	2.1
1 000 000	13 250	12 350	10 150	7 800	8 650	..	..	..	14 000	1.4
2 000 000	16 800	15 550	12 850	9 750	11 000	..	..	..	18 100	0.9
5 000 000	22 700	20 850	17 350	..	..	..	..	..	24 950	0.5
10 000 000	..	..	..	..	..	..	..	..	31 400	0.3

## GLOSSARY

- Actively looking for work** Those persons who were taking active steps to find work. Active steps comprise:
- writing, telephoning or applying in person to an employer for work;
  - answering a newspaper advertisement for a job;
  - checking factory or Commonwealth Employment Service noticeboards;
  - being registered with the Commonwealth Employment Service;
  - checking or registering with any other employment agency;
  - advertising or tendering for work; and
  - contacting friends or relatives.
- Available to start work within four weeks** Those persons who were available to start work within four weeks or could start work within four weeks if suitable childcare was available.
- Discouraged jobseekers** Persons with marginal attachment to the labour force who wanted to work and were available to start work within the next four weeks but whose main reason for not actively looking for work was that they believed they would not find a job for any of the following reasons:
- considered to be too young or too old by employers; or
  - lacked necessary schooling, training, skills or experience; or
  - difficulties with language or ethnic background; or
  - no jobs in their locality or line of work; or
  - no jobs available at all.
- Employed** Persons aged 15–69 years who, during the reference week:
- worked for one hour or more for pay, profit, commission or payment in kind in a job or business, or on a farm (comprising employees, employers and own account workers); or
  - worked for one hour or more without pay in a family business or on a farm (i.e. contributing family workers); or
  - were employees who had a job but were not at work and were: on paid leave; on leave without pay for less than four weeks up to the end of the reference week; stood down without pay because of bad weather or plant breakdown at their place of employment for less than four weeks up to the end of the reference week; on strike or locked out; on workers compensation and expected to be returning to their job; or receiving wages or salary while undertaking full-time study; or
  - were employers, own account workers or contributing family workers who had a job, business or farm, but were not at work.

<b>Family reasons for not actively looking for work</b>	Includes ill health of other than self, childcare and other family considerations.
<b>Full-time work</b>	Work involving 35 or more hours a week.
<b>Had a job to go to</b>	Includes persons who had a job but, up to the end of the reference week, had been away from work without pay for four weeks or longer and had not been actively looking for work.
<b>Job</b>	Any employment, full-time or part-time, lasting two weeks or more.
<b>Job leavers</b>	Persons who voluntarily ceased their last job.
<b>Job losers</b>	Persons who involuntarily ceased their last job.
<b>Main English-speaking countries</b>	Comprises the United Kingdom, Ireland, Canada, South Africa, United States of America and New Zealand.
<b>Marginal attachment to the labour force</b>	Persons who were not in the labour force in the reference week, wanted to work and: <ul style="list-style-type: none"> <li>▪ were actively looking for work but did not meet the availability criteria to be classified as unemployed; or</li> <li>▪ were not actively looking for work but were available to start work within four weeks or could start work within four weeks if childcare was available.</li> </ul> <p>The criteria determining those in the labour force are based on activity (i.e. working or looking for work) and availability to start work during the reference week. The criteria associated with marginal attachment to the labour force, in particular the concepts of wanting to work and reasons for not actively looking for work, are more subjective. Hence, the measurement against these criteria is affected by the respondent's own interpretation of the concepts used. An individual respondent's interpretation is affected by such factors as the respondent's work aspirations, as well as family, economic and other commitments.</p>
<b>Occupation of last job</b>	Classified according to the <i>ASCO — Australian Standard Classification of Occupations</i> (Cat. no. 1221.0).
<b>Part-time work</b>	Work involving less than 35 hours a week.
<b>Personal reasons for not actively looking for work</b>	Includes own ill health/physical disability, pregnancy, attending an educational institution, had no need to work, give others a chance, welfare payments/pension may be affected, moved house or on holidays.
<b>Persons in institutions</b>	Includes persons in general and other hospitals, convalescent homes, homes for the aged, retirement homes, homes for the handicapped, orphanages, boarding schools and inmates in prisons.

<b>Persons in the labour force</b>	Persons aged 15–69 years who meet the criteria that would enable them to be classified as being in the labour force, that is, either employed or unemployed.
<b>Persons not in the labour force</b>	Persons who do not meet the criteria that would enable them to be classified as being in the labour force. To be classified as being in the labour force, a person must be aged 15–69 years and be either employed or unemployed. Persons not in the labour force, therefore, include all persons aged 15–69 years who are not employed, who want to work but do not meet the criteria to be classified as unemployed; who did not want to work; or are permanently unable to work.
<b>Persons not in the labour force for childcare reasons who wanted to work</b>	Persons who wanted to work and: <ul style="list-style-type: none"> <li>▪ were not actively looking for work due to childcare reasons, but were available to start work within four weeks; or</li> <li>▪ were not actively looking for work and were not available to start work within four weeks for childcare reasons.</li> </ul>
<b>Relationship in household</b>	Two or more related persons (relationship includes relationships by blood, marriage or adoption) usually resident in the same household at the time of the survey. A family comprises a married couple or a family head as defined, together with any persons having any of the following relationships to them: <ul style="list-style-type: none"> <li>▪ sons or daughters of any age, if not married and with no children of their own present; or</li> <li>▪ other relatives if not accompanied by a spouse, sons or daughters, or parents of their own; or</li> <li>▪ any children under 15 years of age who do not have a parent present.</li> </ul>
<b>Time since last job</b>	The elapsed time since ceasing their last job.
<b>Unemployed</b>	Persons aged 15–69 years who were not employed during the reference week and: <ul style="list-style-type: none"> <li>▪ had actively looked for full-time or part-time work at any time in the four weeks up to the end of the reference week and: <ul style="list-style-type: none"> <li>* were available for work in the reference week, or would have been available except for temporary illness (i.e. lasting for less than four weeks to the end of the reference week); or</li> <li>* were waiting to start a new job within four weeks from the end of the reference week and would have started in the reference week if the job had been available then; or</li> </ul> </li> <li>▪ were waiting to be called back to a full-time or part-time job from which they had been stood down without pay for less than four weeks up to the end of the reference week (including the whole of the reference week) for reasons other than bad weather or plant breakdown.</li> </ul>

**Wanted to work** Persons not in the labour force who:

- in the four weeks up to the end of the reference week had actively looked for work but did not meet the availability criteria to be classified as unemployed; or
- although claiming to have looked for work (in the four weeks up to the end of the reference week), had not taken active steps to find work; or
- in the four weeks up to the end of the reference week had not looked for work but in the survey answered 'yes' or 'maybe' to the question 'Even though you have not been looking for work would you like a full-time or part-time job?'; or
- in the four weeks up to the end of the reference week, had not looked for work but were responsible for children under 12 years of age and answered 'yes' or 'maybe' to the question 'If you had suitable childcare arrangements for child(ren) under 12, would you like a job?'; or
- were employees who had a job but had been away from work without pay for four weeks or more.

## POPULATIONS AND DATA ITEMS AVAILABLE FROM THIS SURVEY

### POPULATIONS

- POPULATION 1: Persons not in the labour force.
- POPULATION 2: Persons not in the labour force who wanted to work.
- POPULATION 3: Persons not in the labour force with marginal attachment to the labour force.
- POPULATION 4: Persons not in the labour force who wanted to work but were not actively looking for work and were available to start work within four weeks.
- POPULATION 5: Persons not in the labour force who were discouraged jobseekers.
- POPULATION 6: Persons not in the labour force who wanted to work but were not actively looking for work and were not available to start work within four weeks.
- POPULATION 7: Persons not in the labour force for childcare reasons who wanted to work but were not actively looking for work.
- POPULATION 8: Persons not in the labour force who previously had a job.

DATA ITEM	POPULATIONS	DATA ITEM	POPULATIONS
<b>1 STATE OF USUAL RESIDENCE</b>	<b>ALL</b>	<b>6A RELATIONSHIP IN HOUSEHOLD (1)</b>	<b>ALL</b>
New South Wales		Family member	
Victoria		Husband or wife	
Queensland		With dependants	
South Australia		Without dependants	
Western Australia		Lone parent	
Tasmania		With dependants	
Northern Territory		Without dependants	
Australian Capital Territory		Dependent student	
		Non-dependent child	
<b>2 AREA OF USUAL RESIDENCE</b>	<b>ALL</b>	Other family person	
Capital City		Non-family member	
Balance of State/Territory		Lone person	
		Not living alone	
<b>3 REGION OF USUAL RESIDENCE</b>	<b>ALL</b>	Not determined	
Standard labour force dissemination regions		<b>6B RELATIONSHIP IN HOUSEHOLD (2)</b>	<b>ALL</b>
<b>4 SEX</b>	<b>ALL</b>	Family member	
Males		Husband or wife	
Females		With children under 15	
		Without children under 15	
<b>5 MARITAL STATUS</b>	<b>ALL</b>	Lone parent	
Married		With children under 15	
Not married		With dependent students but without children under 15	
		Without dependants	
		Dependent student	
		Non-dependent child	
		Other family person	
		Non-family member	
		Lone person	
		Not living alone	
		Not determined	

DATA ITEM	POPULATIONS
<b>7A BIRTHPLACE AND PERIOD OF ARRIVAL ALL</b>	
Born in Australia	
Born outside Australia	
Arrived before 1971	
Arrived 1971-1980	
Arrived 1981-1990	
Arrived 1991 to survey date	
<b>7B BIRTHPLACE (1) ALL</b>	
Born in Australia	
Born outside Australia	
Born in main English speaking countries	
Born in other countries	
<b>7C BIRTHPLACE (2) ALL</b>	
Born in Australia	
Born outside Australia	
Oceania	
New Zealand	
Europe and the former USSR	
Germany	
Greece	
Italy	
Netherlands	
United Kingdom and Ireland	
Former Yugoslav Republics	
The Middle East and North Africa	
Lebanon	
Southeast Asia	
Malaysia	
Philippines	
Viet Nam	
Northeast Asia	
China(a)	
Southern Asia	
The Americas	
Africa	
(a) Includes Hong Kong SAR.	
<b>8 AGE GROUP (YEARS) ALL</b>	
15-19	
20-24	
25-34	
35-44	
45-54	
55-64	
60-64	
65-69	

DATA ITEM	POPULATIONS
<b>9 PERSONS NOT IN THE LABOUR FORCE SUMMARY VARIABLE 1,8</b>	
Persons not in the labour force	
With marginal attachment to the labour force	
Wanted to work and were actively looking for work	
Were available to start work within four weeks	
Were not available to start work within four weeks	
Wanted to work but were not actively looking for work and were available to start work within four weeks	
Discouraged jobseekers	
Other	
Without marginal attachment to the labour force	
Wanted to work but were not actively looking for work and were not available to start work within four weeks	
Did not want to work	
Permanently unable to work	
<b>10 WHETHER WANTED TO WORK 1,8</b>	
Wanted to work	
Might want to work	
Did not want to work	
Did not know	
<b>11 WHETHER LOOKED FOR WORK IN THE LAST 12 MONTHS ALL</b>	
Had looked for work	
Less than 5 weeks ago	
5 and less than 8 weeks ago	
8 and less than 13 weeks ago	
13 to 52 weeks ago	
13 and less than 26 weeks ago	
26 and less than 39 weeks ago	
39 to 52 weeks ago	
Had not looked for work	
<b>12 MAIN ACTIVITY WHEN NOT IN THE LABOUR FORCE ALL</b>	
Home duties/childcare	
Attending an educational institution	
Retired/voluntarily inactive	
Own disability/handicap	
Own illness/injury	
Looking after ill/disabled person	
Travel/holiday/leisure activity	
Worked in unpaid voluntary job	
Other	



DATA ITEM	POPULATIONS
<b>13 TIME SINCE LAST JOB</b>	<b>ALL</b>
Had had a job	
Under 12 months	
1 and under 4 weeks	
4 and under 8 weeks	
8 and under 13 weeks	
13 and under 26 weeks	
26 and under 39 weeks	
39 and under 52 weeks	
1 and under 3 years	
3 and under 10 years	
3 and under 5 years	
5 and under 10 years	
10 years or more	
10 and under 20 years	
20 years or more	
Had never had a job	
<b>14 REASON FOR CEASING LAST JOB</b>	<b>ALL</b>
Had had a job	
Job loser	
Retrenched	
Job was temporary or seasonal and did not leave to return to studies	
Own ill health/injury	
Business closed down for economic reasons	
Job leaver	
Unsatisfactory work arrangements/ pay/hours	
Job was temporary or seasonal and left to return to studies	
Retired/did not want to work any longer	
Own disability/handicap	
Returned to studies	
To get married	
Pregnancy/to have children	
To look after family, house or someone else	
Have holiday/moved house/ spouse transferred	
Business closed down for other non-economic reasons	
Other	
Had never had a job	
<b>15 OCCUPATION IN LAST JOB</b>	<b>ALL</b>
Last job less than 20 years ago	
Managers and administrators	
Professionals	
Associate professionals	
Tradespersons and related workers	
Advanced clerical and service workers	
Intermediate clerical, sales and service workers	
Intermediate production and transport workers	
Elementary clerical, sales and service workers	
Labourers and related workers	
Last job 20 or more years ago	
Had never had a job	

DATA ITEM	POPULATIONS
<b>16 STATUS IN EMPLOYMENT IN LAST JOB</b>	<b>ALL</b>
Last job less than 20 years ago	
Employer	
Own account worker	
Employee	
Contributing family worker	
Unpaid voluntary worker	
Last job 20 or more years ago	
Had never had a job	
<b>17 FULL-TIME OR PART-TIME STATUS IN LAST JOB</b>	<b>ALL</b>
Last job less than 20 years ago	
Full-time	
Part-time	
Varied/did not know	
Last job 20 or more years ago	
Had never had a job	
<b>18A INTENTION TO ENTER THE LABOUR FORCE</b>	<b>ALL</b>
Intended to enter the labour force	
Might enter the labour force	
Did not intend to enter the labour force	
Did not know	
Permanently unable to work	
<b>18B INTENTION TO ENTER THE LABOUR FORCE IN THE NEXT 12 MONTHS</b>	<b>ALL</b>
Intended to enter the labour force in the next 12 months	
Might enter the labour force in the next 12 months	
Did not intend to enter the labour force in the next 12 months	
Did not know	
<b>19 MAIN SOURCE OF INCOME</b>	<b>ALL</b>
Government pension or cash benefit –	
Age, disability, sole parent's, widow's pension	
War disability, repatriation, service, war widow's pension	
ABSTUDY or AUSTUDY	
Other government pension/benefit	
Profit or loss from own business(a)	
Profit or loss from rental properties	
Dividends or interest	
Child support or maintenance	
Superannuation or annuity	
Workers compensation, accident or sickness insurance	
Other income	
Nil or someone else's income	
(a) Profit or loss from own business or share in a partnership (excluding incorporated business).	

**DATA ITEM**                      **POPULATIONS**

**20 TYPE OF WORK PREFERRED**                      **2-7**  
 Full-time work preferred  
 Part-time work preferred  
 No preference for full-time or part-time work

**21 MAIN REASON FOR NOT ACTIVELY LOOKING FOR WORK**                      **3,4**

Wanted to work and were actively looking for work  
 Were available to start work within four weeks  
 Were not available to start work within four weeks  
 Wanted to work but were not actively looking for work and were available to start work within four weeks  
 Discouraged jobseeker  
 Considered too young or too old by employers  
 Lacked the necessary schooling, training, skills or experience  
 Difficulties with language or ethnic background  
 No jobs in locality or line of work  
 No jobs at all  
 Had a job to go to(a)  
 Personal reasons  
 Own ill health/physical disability/pregnancy  
 Attending an educational institution  
 Had no need to work  
 Give others a chance  
 Welfare payments/pension may be affected  
 Moved house/holidays  
 Family reasons  
 Ill health of other than self  
 Childcare  
 No childcare in locality  
 No childcare available at all  
 Cost/too expensive  
 Booked out/no places available  
 Children too young/too old  
 Prefers to look after children  
 Quality of childcare unsuitable  
 Other childcare reasons  
 Other family considerations  
 No jobs in suitable hours  
 Other reasons  
 Did not know

(a) Includes persons who had a job but up to the end of the reference week, had been away from work without pay for four weeks or longer and had not been actively looking for work.

**DATA ITEM**                      **POPULATIONS**

**22 ALL REASONS FOR NOT ACTIVELY LOOKING FOR WORK**                      **4**

Discouraged jobseeker  
 Considered too young or too old by employers  
 Lacked necessary schooling/training skills or experience  
 Difficulties with language or ethnic background  
 No jobs in locality or line of work  
 No jobs at all  
 Had a job to go to(a)  
 Personal reasons  
 Own ill health/physical disability/pregnancy  
 Attending an educational institution  
 Had no need to work  
 Give others a chance  
 Welfare payments/pension may be affected  
 Moved house/holidays  
 Family reasons  
 Ill health of other than self  
 Childcare  
 Other family considerations  
 No jobs in suitable hours  
 Other reasons  
 Did not know

(a) Includes persons who had a job but up to the end of the reference week, had been away from work without pay for four weeks or longer and had not been actively looking for work.

**23 REASON NOT AVAILABLE TO START WORK WITHIN FOUR WEEKS**                      **6**

Personal reasons  
 Own ill health/physical disability  
 Pregnancy  
 Studying/returning to studies  
 Moved house/holidays  
 Family reasons  
 Ill health of other than self  
 Unable to find suitable childcare  
 Children too young/preferred to look after children  
 On a job related training program  
 Other reasons

DATA ITEM	POPULATIONS
<b>24 MARGINAL ATTACHMENT SUMMARY VARIABLE</b>	<b>3</b>
Wanted to work and were actively looking for work	
Were available to start work within four weeks	
Were not available to start work within four weeks	
Wanted to work but were not actively looking for work and were available to start work within four weeks	
Discouraged jobseekers	
Other	

DATA ITEM	POPULATIONS
<b>25 AGE OF YOUNGEST CHILD</b>	<b>7</b>
0-2 years	
3-4 years	
5 years	
6-9 years	
10-11 years	
12 years and over	
<b>26 NUMBER OF CHILDREN</b>	<b>7</b>
Aged 0-2 years	
Aged 3-4 years	
Aged 5 years	
Aged 6-9 years	
Aged 10-11 years	



## **We've got the answers ... we just can't fit them all into this publication!**

Is there more information you would like about this topic or other supplementary survey topics?

The good news is that the information is available. In fact, we have volumes of detailed information that cannot be placed into the publications but can provide you with more information on the area of interest to you.

### **Meeting your needs with a customised approach**

Detailed information from every supplementary survey is available — that's where we can help. Contact one of our consultants to discuss your needs. They will provide you with the best possible option to solve your data requests in a written quote, clearly setting out all the costs and time frames.

We can supply you with your requested information in a variety of formats to best suit your needs:

- printed tables
- spreadsheets in a range of formats compatible with your software package
- via E-mail
- floppy disk

### **Tailored to your specifications**

We can mix and match from our extensive data holdings to give a complete statistical picture for your policy, planning, research and commercial analysis needs.

Take a look at the list of populations and data items in the previous pages. This contains a comprehensive list of the variables available that you may be interested in for this supplementary survey. These data items can be cross-classified for your exact requirements, offering you the best cost effective solution. The cost will depend on what you have selected and their degree of detail. Payment for this information may be made by credit card or by invoice.

### **Other ABS information is also available**

Contact Robert Bibo on Canberra (02) 6252 6661 to talk about any inquiries you may have about the information from this survey or to order your special data requirements.

For information about a wider range of ABS data, see contact details on the back cover.

## SUPPLEMENTARY SURVEYS

The supplementary and special surveys collect data on particular aspects of the labour force. The following is a historical list of supplementary and special labour force surveys. The data are available in publication form, by subscription or on request. It may be possible to order unpublished data on the following supplementary and special surveys by contacting the ABS.

TITLE	CATALOGUE NUMBER
■ Career Experience. Irregular. Latest issue November 1996	6254.0
■ Career Paths of Persons with Trade Qualifications. Irregular. Latest issue 1993	6243.0
■ Child Care. Irregular. Latest issue March 1996	4402.0
■ Employment Benefits. Discontinued. Latest issue August 1994	6334.0.40.001
■ Job Search Experience of Unemployed Persons. Annual. Latest issue July 1997	6222.0
■ Labour Force Experience. Two-yearly. Latest issue February 1997	6206.0
■ Labour Force Status and Educational Attainment. Final issue February 1994	6235.0
■ Labour Force Status and Other Characteristics of Families. Annual. Latest issue June 1997	6224.0
■ Labour Force Status and Other Characteristics of Migrants. Irregular. Latest issue November 1996	6250.0
■ Labour Mobility. Two-yearly. Latest issue February 1996	6209.0
■ Multiple Jobholding. Irregular. Latest issue August 1994	6216.0.40.001
■ Participation in Education. Annual. Latest issue September 1996	6272.0
■ Persons Employed at Home. Irregular. Latest issue September 1995	6275.0
■ Persons Not in the Labour Force. Annual. Latest issue — September 1997	6220.0
■ Persons Who had Re-entered the Labour Force. Discontinued. Latest issue July 1995	6264.0.40.001
■ Persons Who Have Left the Labour Force. Discontinued. Latest issue September 1994	6267.0.40.001
■ Retirement and Retirement Intentions. Irregular. Latest issue November 1994	6238.0.40.001
■ Successful and Unsuccessful Job Search Experience. Two-yearly. Latest issue July 1996	6245.0
■ Superannuation. Irregular. Latest issue November 1995	6319.0
■ Trade Union Members. Two-yearly. Latest issue August 1996	6325.0
■ Training and Education Experience. Irregular. Latest issue 1993	6278.0
■ Transition from Education to Work. Annual. Latest issue May 1997	6227.0
■ Underemployed Workers. Annual. Latest issue September 1996	6265.0
■ Weekly Earnings of Employees (Distribution). Annual. Latest issue August 1997	6310.0
■ Working Arrangements. Irregular. Latest issue August 1997	6342.0

## FORTHCOMING SUPPLEMENTARY SURVEYS

Topic	Survey month	Release
Retrenchment and Redundancy	July 1997	March 1998
Multiple Jobholding	August 1997	March 1998
Underemployed Workers	September 1997	March 1998
Retirement and Retirement Intentions	November 1997	May 1998

## INQUIRIES

Central Office: (02) 6252 6504

### Regional Offices:

SYDNEY	(02) 9268 4212	ADELAIDE	(08) 8237 7365
MELBOURNE	(03) 9615 7677	HOBART	(03) 6222 5841
BRISBANE	(07) 3222 6068	DARWIN	(08) 8943 2150
PERTH	(08) 9360 5943	CANBERRA	(02) 6207 0283





The ABS publishes a wide range of statistics and other information on Australia's economic and social conditions. Details of what is available in various publications and other products can be found in the ABS Catalogue of Publications and Products available from all ABS Offices.

### **ABS Products and Services**

Many standard products are available from ABS bookshops located in each State and Territory. In addition to these products, information tailored to the needs of clients can be obtained on a wide range of media by contacting your nearest ABS Office. The ABS also provides a Subscription Service for standard products and some tailored information services.

### **National Dial-a-Statistic Line**

0055 86 400

*Steadycom P/L: premium rate 25c/20 secs.*

This number gives 24-hour access, 365 days a year, for a range of important economic statistics including the CPI.

### **Internet**

<http://www.abs.gov.au>

A wide range of ABS information is available via the Internet, with basic statistics available for each State, Territory and Australia. We also have Key National Indicators, ABS product release details and other information of general interest.

### **Sales and Inquiries**

[client.services@abs.gov.au](mailto:client.services@abs.gov.au)

National Mail Order Service	(02) 6252 5249
Subscription Service	1300 366 323

	<b>Information Inquiries</b>	<b>Bookshop Sales</b>
CANBERRA	(02) 6252 6627	(02) 6207 0326
SYDNEY	(02) 9268 4611	(02) 9268 4620
MELBOURNE	(03) 9615 7755	(03) 9615 7755
BRISBANE	(07) 3222 6351	(07) 3222 6350
PERTH	(08) 9360 5140	(08) 9360 5307
ADELAIDE	(08) 8237 7100	(08) 8237 7582
HOBART	(03) 6222 5800	(03) 6222 5800
DARWIN	(08) 8943 2111	(08) 8943 2111



Client Services, ABS, PO Box 10, Belconnen ACT 2616



2622000009975

ISSN 0819-9914

RRP \$19.00